

Product Name	SM Tetranet
Product Number	DX-SM01
Size -- Length	4.00 m / 13' 1"
Size -- Width	3.47 m / 11' 5"
Size -- Height	3.00 m / 9' 10"
Shipping Weight	300 kg / 661.4 lb
Shipping Volume	0.80 m ³ / 28.3 ft ³
Foundations	4
Concrete Volume	1.93 m ³ / 68.2 ft ³

	ASTM F-1487	CSA Z614	EN 1176
Ages	2 years - 5 years	18 months - 5 years	2 years - 6 years
Capacity	9	9	9
Use Zone -- Length	7.99 m / 26' 3"	7.99 m / 26' 3"	7.00 m / 23' 0"
Use Zone -- Width	7.41 m / 24' 4"	7.41 m / 24' 4"	6.47 m / 21' 3"
Use Zone -- Area	37.17 m ² / 400.1 ft ²	36.49 m ² / 392.8 ft ²	29.71 m ² / 319.8 ft ²
Fall Height	1.70 m / 5' 7"	1.70 m / 5' 7"	0.30 m / 1' 0"

*Note: Concrete must be minimum 3500 PSI / 25MPa



To verify product certification, visit www.ipema.org



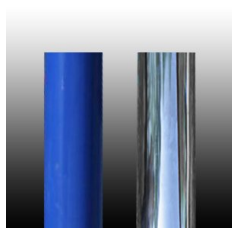
To verify product certification, visit www.ipema.org



Product Features:

SUPPORT POSTS:	This will be 5 1/2" (139.8mm) OD phosphate dipped steel tubing, finished with polyester powder coating.
POST SHIELDS:	Where required, these will completely surround the post to fill in openings in the net, preventing entrapments. Shields will be made of a textile-reinforced flexible rubber material and secured with bolts.
CLIMBING NETS:	These will be 20 mm diameter, polyamide (nylon) rope cable with UV protection and fire retardant solution. Each rope consists of 6 strands each containing 24 galvanized steel reinforcing strands within a polyamide sleeve, wrapped around a solid polyamide core for a total of 144 steel reinforcing strands; each end of the cable having a junction loop attached onto the cable with a finished aluminum sleeve and lined with a galvanized steel wear bar. Rope shall achieve a Class 7-8 Colourfastness rating.
BALL KNOTS:	This will be a one-piece compressed aluminum ball, compressed in place with 150 tons force (667 kN) to prevent the connection from moving and causing premature cable wear.
BASIC FASTENERS:	All fasteners for component attachments are stainless steel.
TURNBUCKLES:	These will be steel alloy that will withstand a maximum load of over 87,675 pounds force (390 kN) along the main axis.

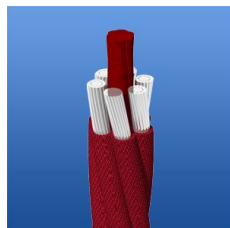
MOUNTING PLATES:	These will be made of galvanized steel. Corner anchors will contain multiple connection points to allow for adjustability of the turnbuckles as well as connection of a safety rope. Centre mast anchors will consist of a stub post that will stabilize the mast and an anchor ring that will secure the assembly to the concrete. This two-piece assembly allows for fine positioning of the post stub to be accomplished during installation, making the process simpler and easier.
ANCHOR BOLTS:	Mounting plates will be secured to concrete blocks with 7/8" (22mm) diameter x 20" (500mm) long "L" Anchor bolts, inserted into the wet concrete when poured.
INSTALLATION:	This should be installed only by a licensed playground installer, trained and certified on the relevant playground standards in place in the region of installation, e.g., NPSI, CPSI or similar certified.
COMPLIANT WITH:	CAN/CSA-Z614 ASTM F-1487 EN-1176 CPSC Handbook for Public Playground Safety
TÜV CERTIFIED:	Certified to EN 1176:2008 TÜV Rhineland Certificate N° AK50162502
IPEMA CERTIFIED:	The DX-SM01 identified in this specification sheet is IPEMA certified. The use and layout of the DX-SM01 conforms to the requirements of ASTM F1487 and CSA Z614. To verify product certification visit www.ipema.org .
OPTIONS:	Optional Equipment: <ul style="list-style-type: none"> · Poured-In-Place Enclosure (Max. Qty: 3) #DX-PIP-01 · Polished Stainless Steel Post (Max. Qty: 1) #SS-POST



Support Posts



Seat & Shield Connector



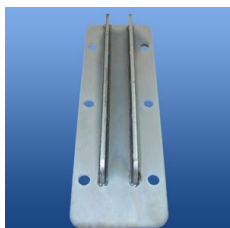
Climbing Net - 20 mm



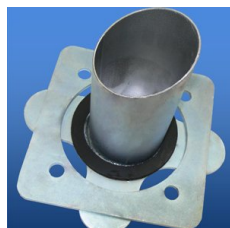
Ball Knot



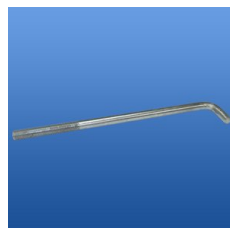
Turnbuckle



Corner Anchor Plate



Adjustable Centre Anchor



Anchor Bolt