

Product Name	Single
Product Number	DX-BBI
Size -- Height	3.05 m / 10' 0"
Court -- Length	6.70 m / 22' 0"
Court -- Width	3.70 m / 12' 2"
Shipping Weight	250 kg / 551.2 lb
Shipping Volume	1.3 m <sup>3</sup> / 45.9 ft <sup>3</sup>
Foundations	1
Concrete Volume	0.25 m <sup>3</sup> / 8.8 ft <sup>3</sup>

\*Note: Concrete must be minimum 3500 PSI / 25MPa

## Product Features:

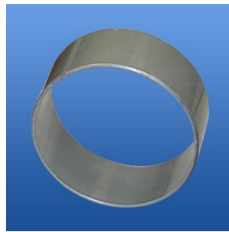
SUPPORT POST:	This will be 6 5/8" (168mm) OD schedule 40 steel pipe, electroplated, finished with polyester powder coating.
HEAD:	This will be 8 5/8" (220mm) OD schedule 40 steel pipe, electroplated, finished with polyester powder coating.
SUPPORT ARMS:	These will be 4 1/2" (114.3mm) OD schedule 40 steel pipe, 8 foot (2440mm) lengths, electro-plated, finished with polyester powder coating.
BACKBOARDS:	These will be aluminum cast 65 pounds (29.5 kg), ribbed & reinforced, painted white with target & border.
GOALS:	These will be 35 pound (15.9 kg) super-heavy-duty Gorilla rims, 5/8" (16mm) rods reinforced with 1/16" (2mm) plate and mechanically punched hole systems for netting attachment.
WARRANTY:	In addition to regular warranties, all Basketball units carry a lifetime warranty against vandalism, excluding graffiti. This warranty covers the support post, head, support arm(s), backboard(s) and goal(s).

The warranty stated above is valid only if the structures are erected in conformity with the installation instructions and procedures furnished by Dynamo Playgrounds using approved parts; have been maintained and inspected in accordance with Dynamo Playgrounds' instructions; have been subjected to normal use for the purpose for which the goods were designed; have not been subjected to misuse, neglect or accident; have not been subjected to addition or substitution of parts; and have not been modified, altered, or repaired by persons other than Dynamo Playgrounds or its designees in a any respect which, in the judgment of Dynamo Playgrounds, affects the condition or operation of the structures.

This warranty does not cover cosmetic items (such as scratches, dents, marring, fading, discolouring, and weathering), paint, or decorations, normal wear and tear, or damage due to checking and warping.

These warranties cover either replacement or repair, at the Manufacturer's discretion, of any Products according to the above descriptions. Transportation and installation-on-site costs are not covered by these warranties, except where specific arrangements are made with written consent from the Manufacturer.

To make claim under the terms of the Warranty, the Buyer's written statement of claim, along with a copy of the original invoice, maintenance records, and supporting photographs, must be sent to the below listed address.



Support Post



Basketball Rim