

Product Name	Biggo Tresi
Product Number	DX-3252
Size -- Width	7.12 m / 23' 4"
Size -- Height	3.53 m / 11' 7"
Shipping Weight	620 kg / 1366.9 lb
Shipping Volume	2.50 m <sup>3</sup> / 88.3 ft <sup>3</sup>
Foundations	1
Concrete Volume	1.59 m <sup>3</sup> / 56.2 ft <sup>3</sup>

	<b>ASTM F-1487</b>	<b>CSA Z614</b>	<b>EN 1176</b>
Ages	5 years - 12 years	5 years - 12 years	6 years - 12 years
Capacity	8	8	8
Use Zone -- Length	8.41 m / 27' 7"	9.50 m / 31' 2"	8.62 m / 28' 3"
Use Zone -- Width	14.95 m / 49' 1"	16.02 m / 52' 7"	15.16 m / 49' 9"
Use Zone -- Area	104.38 m <sup>2</sup> / 1123.5 ft <sup>2</sup>	216.85 m <sup>2</sup> / 2334.2 ft <sup>2</sup>	108.68 m <sup>2</sup> / 1169.8 ft <sup>2</sup>
Fall Height	2.95 m / 9' 8"	2.95 m / 9' 8"	1.76 m / 5' 9"
No-Encroachment Zone	Not Applicable	1.80 m / 5' 11"	Not Applicable

\*Note: Concrete must be minimum 3500 PSI / 25MPa



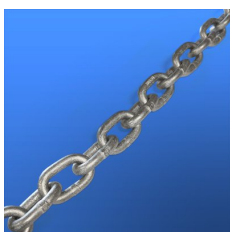
## Product Features:

SUPPORT POST:	This will be 10 3/4" (273mm) OD Schedule 60 steel tubing.
SUPPORT ARMS:	This will be 6 1/2" (165mm) OD Schedule 80 steel tubing.
U-JOINT SWIVEL:	This will be a stainless steel universal joint swivel with a 5 piece ball bearing system working in conjunction with a 2 piece thrust bearing system.
SUSPENSION CHAIN:	This will be either 5/16" (8 mm) galvanized steel chain. Each chain will have independent connections at seat and pivot.
SEAT CONNECTION:	The seat will be connected to the chain at four points, each by a one-piece machined stainless steel sleeve. (Patent Pending)
SEAT BUMPER:	This will be 3 1/2" (90mm) OD textile reinforced high-pressure rubber hose, containing no external dye markings and covered with a wear and soil resistant surface.
BIGGO™ TRESI SEAT:	This will be a one-piece aluminum bowl with seat bumper. Two additional bumper rings will be suspended between the seat and the suspension chain. Each suspended bumper will be held in place with with four 20 mm rope sections.
BASIC FASTENERS:	All fasteners for component attachments are stainless steel.

PAINT PROCESS:	All exposed steel will be finished with polyester powder coating unless otherwise specified. Prior to the powder coating application, the surface will undergo sand blasting and will be treated with a zinc rich epoxy primer having a minimum thickness of 1.5 mils.
INSTALLATION:	This should be installed only by a licensed playground installer, trained and certified on the relevant playground standards in place in the region of installation, e.g., NPSI, CPSI or similar certified.
NO-ENCROACHMENT ZONE:	Where required, this will be an obstacle-free zone that does not necessarily meet the requirements of the protective surfacing zone. See applicable standard for more information.
COMPLIANT WITH:	<b>CAN/CSA-Z614</b> <b>ASTM F-1487</b> <b>EN-1176</b> <b>CPSC Handbook for Public Playground Safety</b>



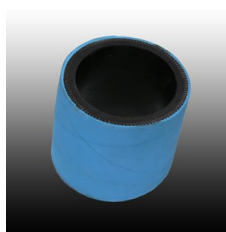
† Where proper surfacing is used, this product meets the ADAAG guidelines for accessibility, allowing the same play possibilities for people of all abilities.



Galvanized Steel Chain



Biggo Seat Connector



Biggo Bumper