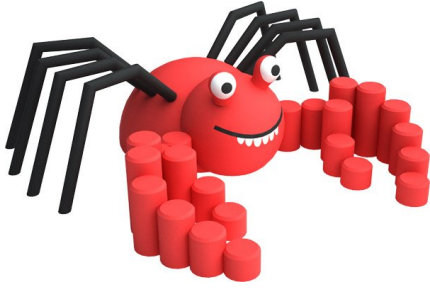




PRODUCT SPECIFICATION



Product Name	Lobster
Product Number	CPZ-0015
Approx. Size -- Length	2.977 m / 9' 9 1/4"
Approx. Size -- Width	3.306 m / 10' 10 1/8"
Approx. Size -- Height	0.887 m / 2' 10 7/8"
Foundations	1
Concrete Volume	3.57 m ³ / 126.00 ft ³

	ASTM F-1487	CSA Z614	EN 1176
Ages	2 years - 5 years	18 months - 5 years	2 years - 8 years
Capacity	5	5	5
Use Zone -- Length	6.938 m / 22' 9 1/8"	6.881 m / 22' 6 7/8"	6.280 m / 20' 7 1/4"
Use Zone -- Width	7.268 m / 23' 10 1/8"	7.211 m / 23' 7 7/8"	6.611 m / 21' 8 1/4"
Use Zone -- Area	41.84 m ² / 450.4 ft ²	41.17 m ² / 443.2 ft ²	34.49 m ² / 371.3 ft ²
Fall Height	0.887 m / 2' 10 7/8"	0.887 m / 2' 10 7/8"	0.887 m / 2' 10 7/8"

*Note: Concrete must be minimum 3500 PSI / 25MPa

Product Features:

MAIN BODY COMPOSITION: Designed for indoor and outdoor use; the main body of the play unit consists of a soft rubber coating adhered to a fiberglass shell. This composition creates a safe user experience combined with a long product life.

RUBBER COATING COMPOSITION: The rubber coating is made from Ethylene Propylene Diene Rubber (EPDM) and Styrene Butadiene Rubber (SBR) pellets which are bound together creating a smooth unitary surface. The pellets are unified using an aliphatic polyurethane (PU) binder.

FIBREGLASS SHELL: The hollow fiberglass shell is manufactured to be vandal-resistant and strong.

COLOURS: The vibrant colour schemes and playful graphics create an inviting addition to any play space. The colours are made to be UV stable capable of withstanding outdoor use. Product is produced using the colours shown. Actual colours of products and materials may appear slightly different than pictured.

INSTALLATION: The play units simple design makes installation fast and efficient.

SAFETY SURFACING: The play unit is designed to require minimal safety surfacing depth. Ensure the safety surfacing area is compliant with the governing playground standard.