

Product Name	Biggo Hexo
Product Number	DX-3600
Size -- Width	21.42 m / 70' 3"
Size -- Height	3.12 m / 10' 3"
Shipping Weight	1900 kg / 4188.8 lb
Shipping Volume	7.40 m ³ / 261.3 ft ³
Foundations	7
Concrete Volume	No Concrete Required

	ASTM F-1487	CSA Z614	EN 1176
Ages	2 years - 12 years	18 months - 12 years	2 years - 12 years
Capacity	24	24	24
Use Zone -- Length	9.55 m / 31' 4"	8.17 m / 26' 10"	8.04 m / 26' 5"
Use Zone -- Width	25.09 m / 82' 4"	25.09 m / 82' 4"	18.24 m / 59' 10"
Fall Height	2.39 m / 7' 10"	2.39 m / 7' 10"	1.51 m / 4' 11"
No-Encroachment Zone	Not Applicable	1.80 m / 5' 11"	Not Applicable



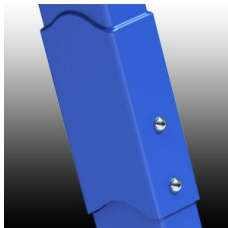
Product Features:

SUPPORT POST:	This will be 3" x 6" (75mm x 150mm) galvanized rectangular steel tubing, 3/16" (5mm) thick, finished with polyester powdercoating.
FRAME JUNCTION:	This will involve a rectangular tubular steel over-sleeve, welded fully around its upper perimeter, which sleeves over the top end of each leg on its lower end. The junction will be secured in place with stainless steel bolts, and finished with polyester powder coating.
PENDULUM PIVOT:	This will be a steel pivot with a self-lubricating nylon bushing and pivot & tamper-resistant attachments. The pivot will be finished with polyester powder coating.
SUSPENSION CHAIN:	This will be 8 mm galvanized steel chain. Each chain will have independent connections at seat and pivot.
SEAT CONNECTION:	The seat will be connected to the chain at four points, each by a one-piece machined stainless steel sleeve with tamper-resistant bolts. (Patent Pending)
SEAT BUMPER:	This will be 3 1/2" (90mm) OD textile reinforced high-pressure rubber hose, containing no external dye markings and covered with a wear and soil resistant surface.
BIGGO™ SEAT:	This will be a one-piece aluminum bowl, weighing with its bumper and pieces no more than 42 lbs (19 kg) empty.
BASIC FASTENERS:	All fasteners for component attachments are stainless steel.

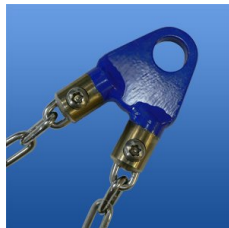
- FOOT BASE:** This will be 2' x 4' (610mm x 1220mm) galvanized steel plates, 3/16" (5mm) thick, attached to the support posts with 2" x 2" (50mm x 50mm) galvanized angle steel braces and buried under 4' 6" (1370mm) of fill mass for stability.
- INSTALLATION:** This should be installed only by a licensed playground installer, trained and certified on the relevant playground standards in place in the region of installation, e.g., NPSI, CPSI or similar certified.
- NO-ENCROACHMENT ZONE:** Where required, this will be an obstacle-free zone that does not necessarily meet the requirements of the protective surfacing zone. See applicable standard for more information.
- COMPLIANT WITH:** **CAN/CSA-Z614-07**
ASTM F-1487-11
EN-1176
CPSI Handbook for Public Playground Safety
- TÜV CERTIFIED:** Certified to EN 1176:2008 TÜV Rhineland Certificate N° AK50084823
- IPEMA CERTIFIED:** The DX-3600 identified in this specification sheet is IPEMA certified. The use and layout of the DX-3600 conforms to the requirements of ASTM F1487 and CSA Z614. To verify product certification visit www.ipema.org.



† Where proper surfacing is used, this product meets the ADAAG guidelines for accessibility, allowing the same play possibilities for people of all abilities.



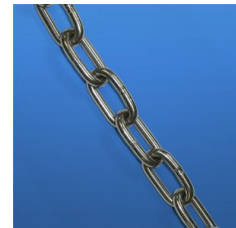
Frame Junction



Pendulum Pivot



Nylon Bushing



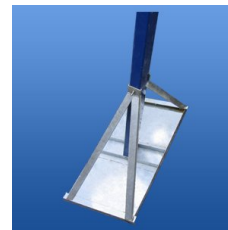
Galvanized Steel Chain



Biggo Seat Connector



Biggo Bumper



Biggo Footing Base