

Product Name	Genesis XL
Product Number	DX-106
Size -- Length	15.27 m / 50' 1"
Size -- Width	15.27 m / 50' 1"
Size -- Height	9.70 m / 31' 10"
Shipping Weight	1205 kg / 2656.6 lb
Shipping Volume	4.10 m ³ / 144.8 ft ³
Foundations	5
Concrete Volume	31.20 m ³ / 1101.8 ft ³

	ASTM F-1487	CSA Z614	EN 1176
Ages	5 years - 12 years	5 years - 12 years	6 years - 14 years
Capacity	180	180	180
Use Zone -- Length	18.93 m / 62' 1"	18.93 m / 62' 1"	18.67 m / 61' 3"
Use Zone -- Width	18.93 m / 62' 1"	18.93 m / 62' 1"	18.67 m / 61' 3"
Fall Height	2.20 m / 7' 3"	2.20 m / 7' 3"	1.80 m / 5' 11"

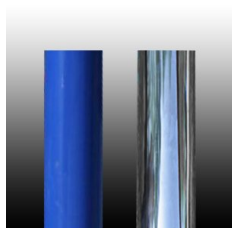
*Note: Concrete must be minimum 3500 PSI / 25MPa



Product Features:

- SUPPORT POSTS:** This will be 6 1/2" (165.2mm) OD phosphate dipped steel tubing, finished with polyester powder coating.
- POST SHIELDS:** Where required, these will completely surround the post to fill in openings in the net, preventing entrapments. Shields will be made of a textile-reinforced flexible rubber material and secured with bolts.
- CLIMBING NETS:** This will be 20mm diameter and 22mm diameter, polyamide (nylon) rope cable with UV protection and fire retardant solution. Each rope consists of 6 strands each containing 24 steel reinforcing strands within a polyamide sleeve, wrapped around a solid polyamide core for a total of 144 steel reinforcing strands; each end of the cable having a junction loop attached onto the cable with a finished aluminum sleeve and lined with a galvanized steel wear bar. Edge ropes will contain a solid core of wound steel cables in place of the polyamide core for a total of 168 steel reinforcing strands. Rope shall achieve a Class 7-8 Colourfastness rating.
- BALL KNOTS:** This will be a one-piece compressed aluminum ball, compressed in place with 150 tons force (667 kN) to prevent the connection from moving and causing premature cable wear.
- BASIC FASTENERS:** All fasteners for component attachments are stainless steel.
- TURNBUCKLES:** These will be steel alloy that will withstand a maximum load of over 112,000 pounds force (498 kN) along the main axis.

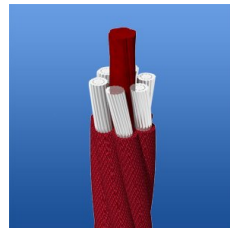
- MOUNTING PLATES:** These will be made of galvanized steel. Corner anchors will contain multiple connection points to allow for adjustability of the turnbuckles as well as connection of a safety rope. Centre mast anchors will consist of a stub post that will stabilize the mast and an anchor ring that will secure the assembly to the concrete. This two-piece assembly allows for fine positioning of the post stub to be accomplished during installation, making the process simpler and easier.
- ANCHOR BOLTS:** Mounting plates will be secured to concrete blocks with 1" (24mm) diameter x 31 1/2" (800mm) long "L" Anchor bolts, inserted into the wet concrete when poured.
- INSTALLATION:** This should be installed only by a licensed playground installer, trained and certified on the relevant playground standards in place in the region of installation, e.g., NPSI, CPSI or similar certified.
- COMPLIANT WITH:** **CAN/CSA-Z614**
ASTM F-1487
EN-1176
CPSC Handbook for Public Playground Safety
- TÜV CERTIFIED:** Certified to EN 1176:2008 TÜV Rhineland Certificate N° AK50162502
- OPTIONS:** Optional Equipment:
- Net Seat (Max. Qty: 16) #DX-NS
 - Poured-In-Place Enclosure (Max. Qty: 4) #DX-PIP-01
 - Polished Stainless Steel Post (Max. Qty: 1) #SS-POST



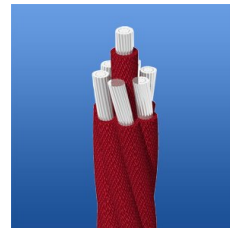
Support Posts



Seat & Shield Connector



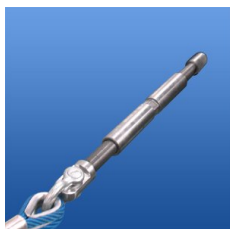
Climbing Net - 20 mm



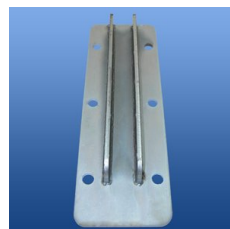
Climbing Net - 22 mm



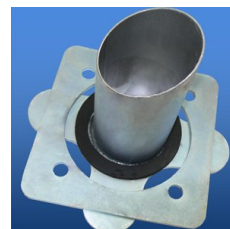
Ball Knot



Turnbuckle



Corner Anchor Plate



Adjustable Centre Anchor