

| | |
|-----------------|--|
| Product Name | Genesis Jumbo |
| Product Number | DX-105 |
| Size -- Length | 14.14 m / 46' 5" |
| Size -- Width | 14.14 m / 46' 5" |
| Size -- Height | 8.70 m / 28' 7" |
| Shipping Weight | 780 kg / 1719.6 lb |
| Shipping Volume | 2.20 m ³ / 77.7 ft ³ |
| Foundations | 5 |
| Concrete Volume | 16.80 m ³ / 593.3 ft ³ |

| | ASTM F-1487 | CSA Z614 | EN 1176 |
|--------------------|--------------------|--------------------|--------------------|
| Ages | 5 years - 12 years | 5 years - 12 years | 6 years - 14 years |
| Capacity | 160 | 160 | 160 |
| Use Zone -- Length | 17.80 m / 58' 5" | 17.80 m / 58' 5" | 17.14 m / 56' 3" |
| Use Zone -- Width | 17.80 m / 58' 5" | 17.80 m / 58' 5" | 17.14 m / 56' 3" |
| Fall Height | 2.20 m / 7' 3" | 2.20 m / 7' 3" | 1.50 m / 4' 11" |

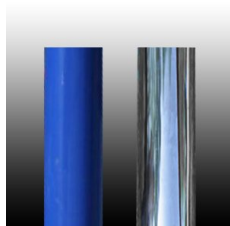
*Note: Concrete must be minimum 3500 PSI / 25MPa



Product Features:

- SUPPORT POSTS:** This will be 6 1/2" (165.2mm) OD phosphate dipped steel tubing, finished with polyester powder coating.
- POST SHIELDS:** Where required, these will completely surround the post to fill in openings in the net, preventing entrapments. Shields will be made of a textile-reinforced flexible rubber material and secured with bolts.
- CLIMBING NETS:** This will be 20mm diameter and 22mm diameter, polyamide (nylon) rope cable with UV protection and fire retardant solution. Each rope consists of 6 strands each containing 24 steel reinforcing strands within a polyamide sleeve, wrapped around a solid polyamide core for a total of 144 steel reinforcing strands; each end of the cable having a junction loop attached onto the cable with a finished aluminum sleeve and lined with a galvanized steel wear bar. Edge ropes will contain a solid core of wound steel cables in place of the polyamide core for a total of 168 steel reinforcing strands. Rope shall achieve a Class 7-8 Colourfastness rating.
- BALL KNOTS:** This will be a one-piece compressed aluminum ball, compressed in place with 150 tons force (667 kN) to prevent the connection from moving and causing premature cable wear.
- BASIC FASTENERS:** All fasteners for component attachments are stainless steel.
- TURNBUCKLES:** These will be steel alloy that will withstand a maximum load of over 87,675 pounds force (390 kN) along the main axis.

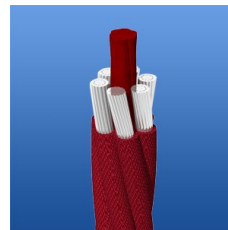
- MOUNTING PLATES:** These will be made of galvanized steel. Corner anchors will contain multiple connection points to allow for adjustability of the turnbuckles as well as connection of a safety rope. Centre mast anchors will consist of a stub post that will stabilize the mast and an anchor ring that will secure the assembly to the concrete. This two-piece assembly allows for fine positioning of the post stub to be accomplished during installation, making the process simpler and easier.
- ANCHOR BOLTS:** Mounting plates will be secured to concrete blocks with 7/8" (22mm) diameter x 20" (500mm) long "L" Anchor bolts, inserted into the wet concrete when poured.
- INSTALLATION:** This should be installed only by a licensed playground installer, trained and certified on the relevant playground standards in place in the region of installation, e.g., NPSI, CPSI or similar certified.
- COMPLIANT WITH:** **CAN/CSA-Z614**
ASTM F-1487
EN-1176
CPSC Handbook for Public Playground Safety
- TÜV CERTIFIED:** Certified to EN 1176:2008 TÜV Rhineland Certificate N° AK50162502
- OPTIONS:** Optional Equipment:
- Net Seat (Max. Qty: 8) #DX-NS
 - Poured-In-Place Enclosure (Max. Qty: 4) #DX-PIP-01
 - Polished Stainless Steel Post (Max. Qty: 1) #SS-POST



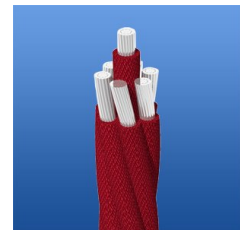
Support Posts



Seat & Shield Connector



Climbing Net - 20 mm



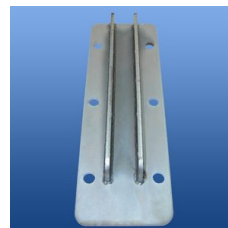
Climbing Net - 22 mm



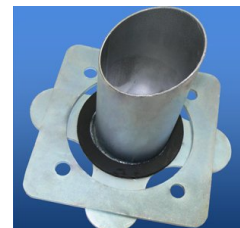
Ball Knot



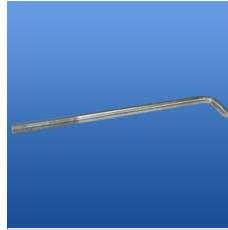
Turnbuckle



Corner Anchor Plate



Adjustable Centre Anchor



Anchor Bolt