

Product Name	Genesis Medium+
Product Number	DX-102-S
Size -- Length	10.86 m / 35' 8"
Size -- Width	9.97 m / 32' 9"
Size -- Height	5.70 m / 18' 8"
Shipping Weight	645 kg / 1422.0 lb
Shipping Volume	2.90 m ³ / 102.4 ft ³
Foundations	7
Concrete Volume	3.06 m ³ / 108.1 ft ³

	ASTM F-1487	CSA Z614	EN 1176
Ages	5 years - 12 years	5 years - 12 years	6 years - 12 years
Capacity	68	68	68
Use Zone -- Length	14.52 m / 47' 8"	14.52 m / 47' 8"	14.86 m / 48' 9"
Use Zone -- Width	13.63 m / 44' 9"	13.63 m / 44' 9"	13.97 m / 45' 10"
Fall Height	1.92 m / 6' 4"	1.92 m / 6' 4"	1.22 m / 4' 0"

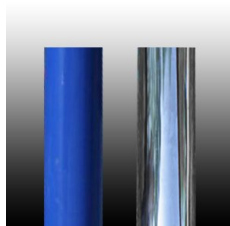
*Note: Concrete must be minimum 3500 PSI / 25MPa



Product Features:

SUPPORT POSTS:	This will be 5 1/2" (139.8mm) OD galvanized steel tubing, finished with polyester powder coating.
POST SHIELDS:	Where required, these will completely surround the post to fill in openings in the net, preventing entrapments. Shields will be made of a textile-reinforced flexible rubber material and secured with bolts.
CLIMBING NETS:	This will be 20mm diameter and 22mm diameter, polyamide (nylon) rope cable with UV protection and fire retardant solution. Each rope consists of 6 strands each containing 24 steel reinforcing strands within a polyamide sleeve, wrapped around a solid polyamide core for a total of 144 steel reinforcing strands; each end of the cable having a junction loop attached onto the cable with a finished aluminum sleeve and lined with a galvanized steel wear bar. Edge ropes will contain a solid core of wound steel cables in place of the polyamide core for a total of 168 steel reinforcing strands. Rope shall achieve a Class 7-8 Colourfastness rating.
SLIDE MATERIAL:	This will be UV protected LLDPE (linear low-density polyethylene).
BALL KNOTS:	This will be a one-piece compressed aluminum ball, compressed in place with 150,000 pounds force (667 kN) to prevent the connection from moving and causing premature cable wear.
BASIC FASTENERS:	All fasteners for component attachments are stainless steel.
TURNBUCKLES:	These will be steel alloy that will withstand a maximum load of over 87,675 pounds force (390 kN) along the main axis.

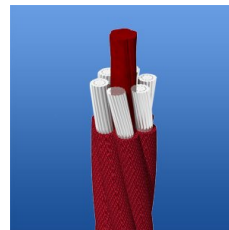
- MOUNTING PLATES:** These will be made of galvanized steel. Corner anchors will contain multiple connection points to allow for adjustability of the turnbuckles as well as connection of a safety rope. Centre mast anchors will consist of a stub post that will stabilize the mast and an anchor ring that will secure the assembly to the concrete. This two-piece assembly allows for fine positioning of the post stub to be accomplished during installation, making the process simpler and easier.
- ANCHOR BOLTS:** Mounting plates will be secured to concrete blocks with 7/8" (22mm) diameter x 20" (500mm) long "L" Anchor bolts, inserted into the wet concrete when poured.
- INSTALLATION:** This should be installed only by a licensed playground installer, trained and certified on the relevant playground standards in place in the region of installation, e.g., NPSI, CPSI or similar certified.
- COMPLIANT WITH:** **CAN/CSA-Z614-07**
ASTM F-1487-07a^{e1}
EN-1176
CPSC Handbook for Public Playground Safety
- TÜV CERTIFIED:** Certified to EN 1176:2008 TÜV Rhineland Certificate N° AK50162502
- OPTIONS:** Optional Equipment:
- Net Seat (Max. Qty: 4) #DX-NS
 - Poured-In-Place Enclosure (Max. Qty: 4) #DX-PIP-01
 - Polished Stainless Steel Post (Max. Qty: 3) #SS-POST



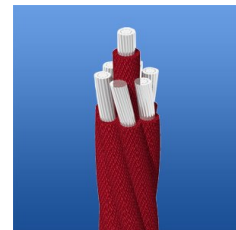
Support Posts



Seat & Shield Connector



Climbing Net - 20 mm



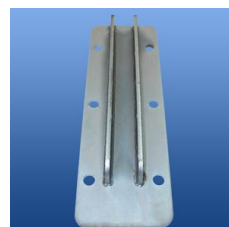
Climbing Net - 22 mm



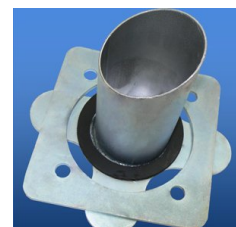
Ball Knot



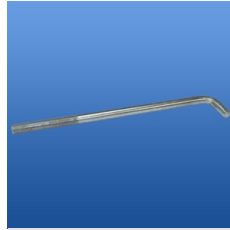
Turnbuckle



Corner Anchor Plate



Adjustable Centre Anchor



Anchor Bolt