

Product Name	Biggo Trio™
Product Number	DX-3300
Size -- Width	10.87 m / 35' 8"
Size -- Height	3.12 m / 10' 3"
Shipping Weight	955 kg / 2105.4 lb
Shipping Volume	3.70 m ³ / 130.7 ft ³
Foundations	4
Concrete Volume	1.07 m ³ / 37.8 ft ³

	ASTM F-1487	CSA Z614	EN 1176
Ages	2 years - 12 years	18 months - 12 years	2 years - 12 years
Capacity	12	12	12
Use Zone -- Length	9.18 m / 30' 1"	7.39 m / 24' 3"	7.65 m / 25' 1"
Use Zone -- Width	14.52 m / 47' 8"	13.61 m / 44' 8"	9.39 m / 30' 10"
Use Zone -- Area	111.64 m ² / 1201.7 ft ²	91.60 m ² / 986.0 ft ²	69.22 m ² / 745.1 ft ²
Fall Height	2.39 m / 7' 10"	2.39 m / 7' 10"	1.51 m / 4' 11"
No-Encroachment Zone	Not Applicable	1.80 m / 5' 11"	Not Applicable

*Note: Concrete must be minimum 3500 PSI / 25MPa



To verify product certification, visit www.ipema.org

To verify product certification, visit www.ipema.org



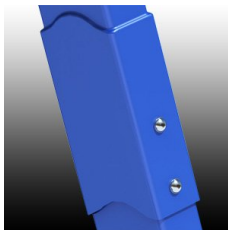
Product Features:

- SUPPORT POST:** This will be 3" x 6" (75mm x 150mm) rectangular steel tubing, 3/16" (5mm) thick, embedded in concrete footings.
- FRAME JUNCTION:** This will involve a rectangular tubular steel over-sleeve, welded fully around its upper perimeter, which sleeves over the top end of each leg on its lower end. The junction will be secured in place with stainless steel bolts, and finished with polyester powder coating.
- SWIVEL CONNECTOR:** This will be an aluminum swivel connector with a low friction and high abrasion resistant UHMWPE bushing and tamper-resistant attachments. The aluminum swivel will have a smooth machine finish.
- SUSPENSION CHAIN:** This will be either 5/16" (8 mm) galvanized steel chain. Each chain will have independent connections at seat and pivot.
- SEAT CONNECTION:** The seat will be connected to the chain at four points, each by a one-piece machined stainless steel sleeve. (Patent Pending)
- SEAT BUMPER:** This will be 3 1/2" (90mm) OD textile reinforced high-pressure rubber hose, containing no external dye markings and covered with a wear and soil resistant surface.
- BIGGO™ SEAT:** This will be a one-piece aluminum bowl, weighing with its bumper and pieces no more than 42 lbs (19 kg) empty.

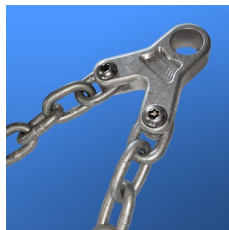
- BASIC FASTENERS:** All fasteners for component attachments are stainless steel.
- PAINT PROCESS:** All exposed steel will be finished with polyester powder coating unless otherwise specified. Prior to the powder coating application, the surface will undergo sand blasting and will be treated with a zinc rich epoxy primer having a minimum thickness of 1.5 mils.
- INSTALLATION:** This should be installed only by a licensed playground installer, trained and certified on the relevant playground standards in place in the region of installation, e.g., NPSI, CPSI or similar certified.
- NO-ENCROACHMENT ZONE:** Where required, this will be an obstacle-free zone that does not necessarily meet the requirements of the protective surfacing zone. See applicable standard for more information.
- COMPLIANT WITH:** **CAN/CSA-Z614**
ASTM F-1487
EN-1176
CPSC Handbook for Public Playground Safety
- TÜV CERTIFIED:** Certified to EN 1176:2008 TÜV SÜD Certificate N° Z1 13 08 84504 002
- IPEMA CERTIFIED:** The DX-3300 identified in this specification sheet is IPEMA certified. The use and layout of the DX-3300 conforms to the requirements of ASTM F1487 and CSA Z614. To verify product certification visit www.ipema.org.



† Where proper surfacing is used, this product meets the ADAAG guidelines for accessibility, allowing the same play possibilities for people of all abilities.



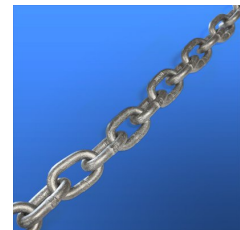
Frame Junction



Swivel Connector



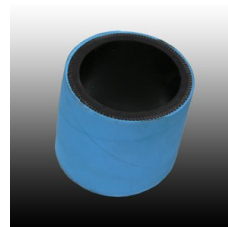
UHMWPE Bushing



Galvanized Steel Chain



Biggo Seat Connector



Biggo Bumper