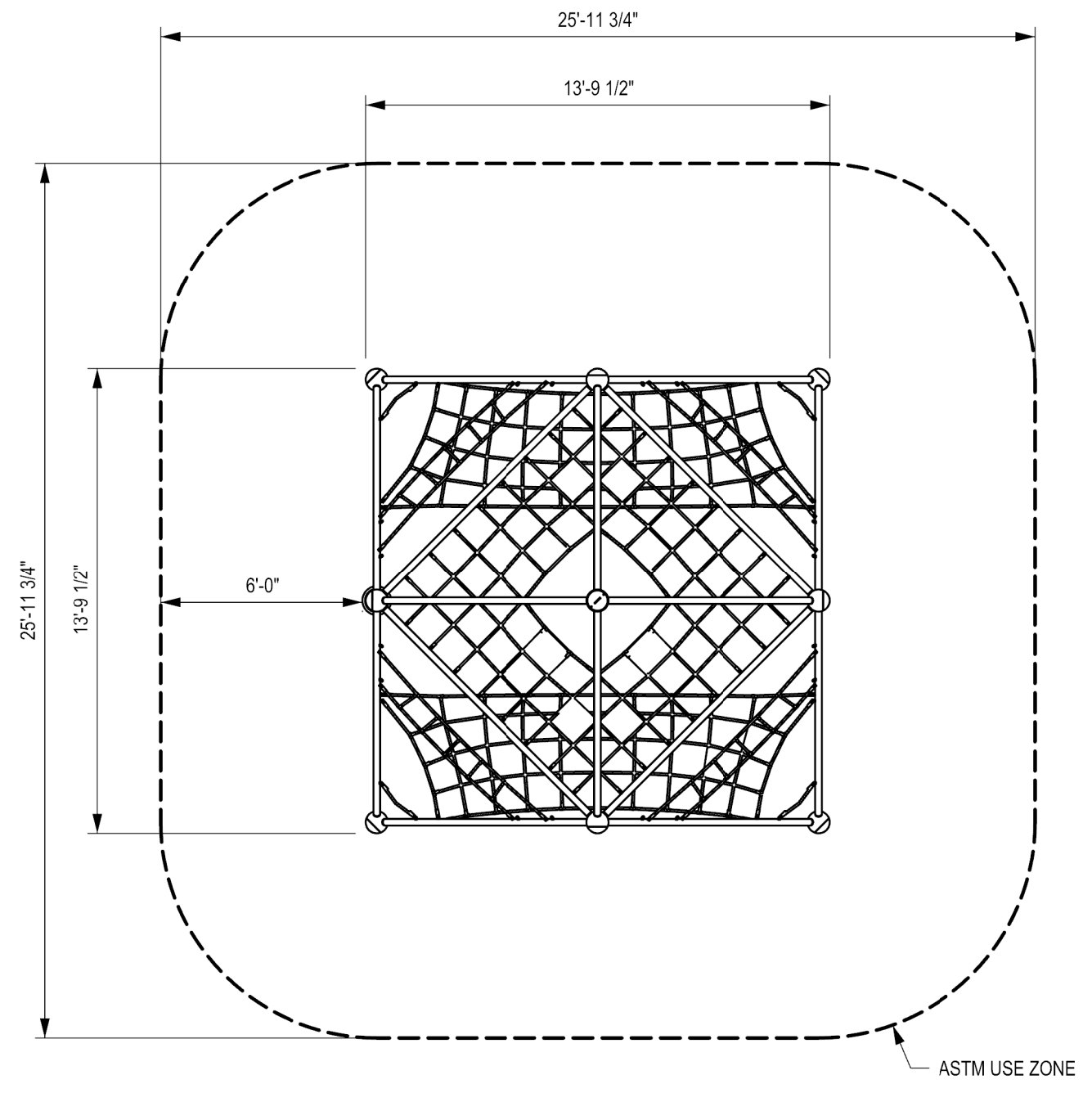
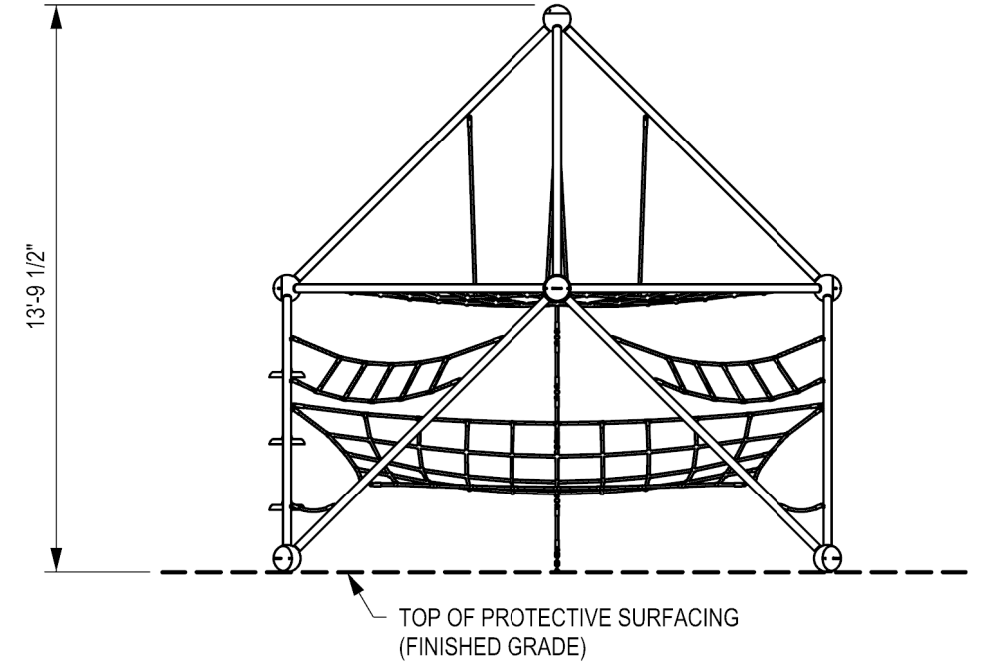


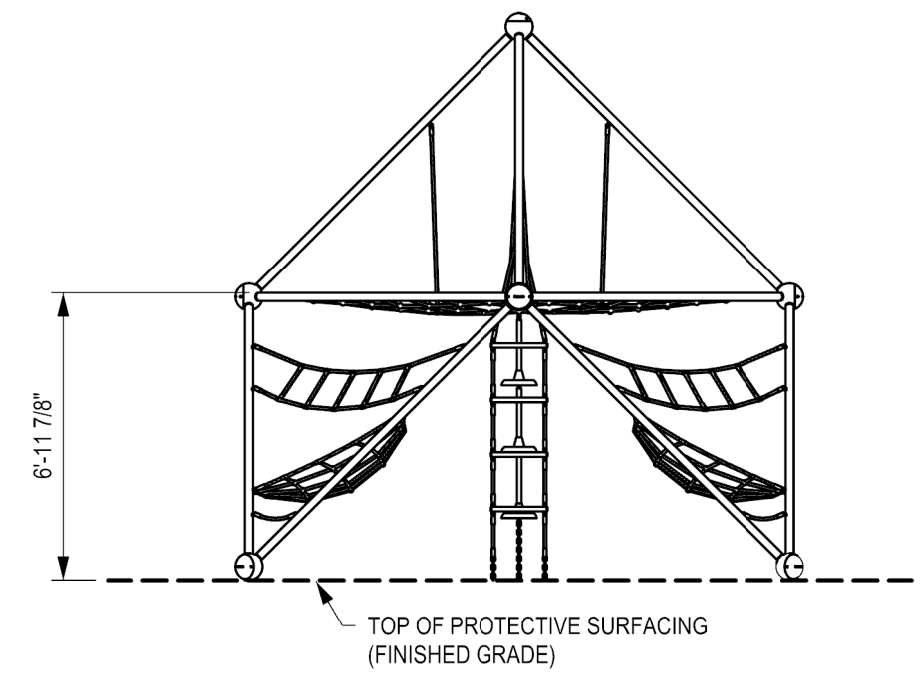
REVISION HISTORY					
REV	DESCRIPTION	REF. No.	DATE	DRWN BY:	RWD BY:
0	Initial Release	WO 1964D	2018-11-14	LL	
1	Rotated structure by 45 deg for dwg clarity. Added right elevation view. Added detail numbers. Height changed from 13' 9 1/8" to 13' - 9 1/2"	WO# 589	2020-07-30	WM	



1 ASTM USE ZONE PLAN VIEW



2 FRONT ELEVATION VIEW



3 RIGHT ELEVATION VIEW

CLIENT:
PROJECT NAME:
PRODUCT NO: DX-812

DRAWING TITLE:
METEOR W/ PLANAR NETS
ASTM USE ZONE DRAWING

REV: 1	SHEET: 1 OF 1	SHEET SIZE: PA3	SCALE: NTS
DESIGNED BY: LL	DATE: 2018-11-14		
DRAWN BY: LL	DATE: 2018-11-14		
CHECKED BY:	DATE:		
REVIEWED BY:	DATE:		
APPROVED BY:	DATE:		

DYNAMO
PLAYGROUNDS

Local: 613-446-0030
Toll free: 800-790-0034
Email: info@dynamoplaygrounds.com
Fax: 613-446-0034
URL: www.dynamoplaygrounds.com

REVISION HISTORY					
REV	DESCRIPTION	REF. No.	DATE	DRWN BY:	RWD BY:
0	Initial Release for Use	WO# 1964D	2018-11-06	JZ	

1. THE FOUNDATION IN THE DRAWING TO BE USED AS A MINIMUM GUIDELINE. CHECK WITH LOCAL ENGINEERS
2. THE CONCRETE SHALL BE GRADE C25 (CHARACTERISTIC STRENGTH OF 25MPa AT 28 DAYS) MINIMUM.
3. THE FOUNDATION SHALL BE PLACED ON FIRMED UNDISTURBED SOIL SURFACE. WHEREVER EXCAVATION OCCURS BELOW THE DESIGNED FOUNDATION LEVEL WELL COMPACTED BACK FILL OR LEAN CONCRETE SHALL BE USED FOR LEVELING.
4. BACKFILLING FOR FOUNDATION SHALL BE PLACED EVENLY IN LAYERS OF 6" (150mm) THICKNESS AND SHALL BE WELL COMPACTED.
5. THE FOUNDATION DESIGN IS SUITABLE FOR SOIL WITH A BEARING CAPACITY OF 3100 PSF (150 KPA) AND ABOVE.
6. THE FOUNDATION DESIGN IS SUITABLE FOR SOIL WITH FROST LINE OF 4' (1200 MM) OR LESS.

CLIENT:

PROJECT NAME: C-82040

PRODUCT NO: DX-812

DRAWING TITLE:

DX-812 FOUNDATION DWG

REV:	SHEET:	SHEET SIZE:	SCALE:
0	1 OF 1	PA3	NTS

DESIGNED BY: JZ DATE: 2018-11-06

DRAWN BY: JZ DATE: 2018-11-06

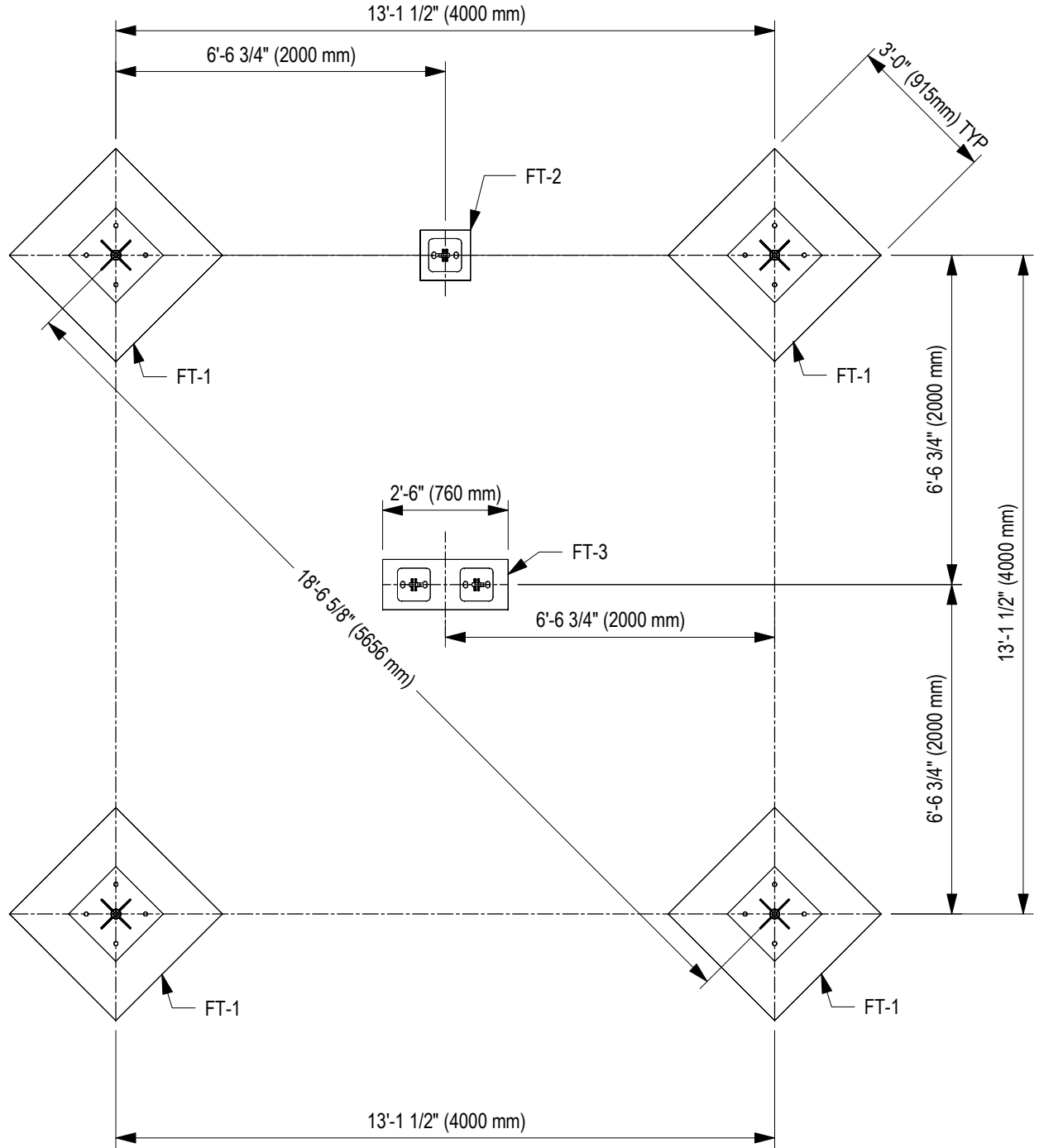
CHECKED BY: LL DATE: 2018-11-13

REVIEWED BY: DATE:

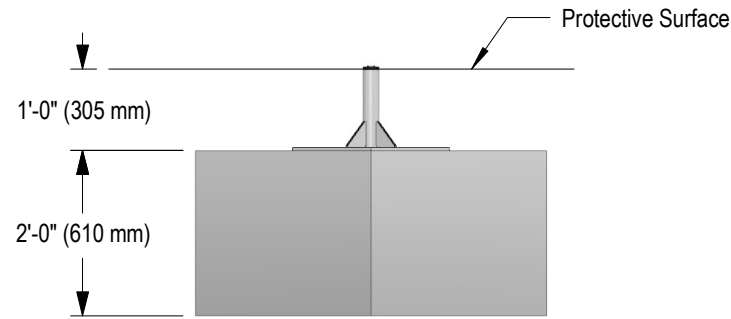
APPROVED BY: DATE:

DYNAMO PLAYGROUNDS

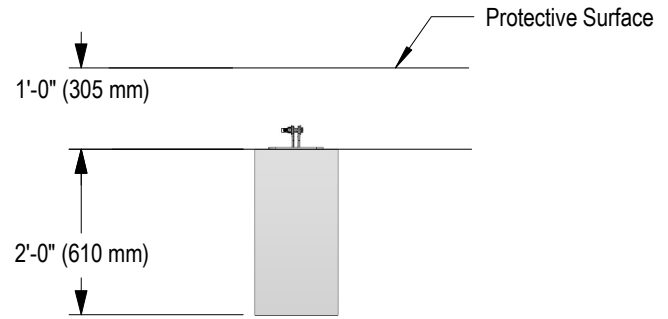
Local: 613-446-0030
 Toll free: 800-790-0034
 Email: info@dynamoplaygrounds.com
 Fax: 613-446-0034
 URL: www.dynamoplaygrounds.com



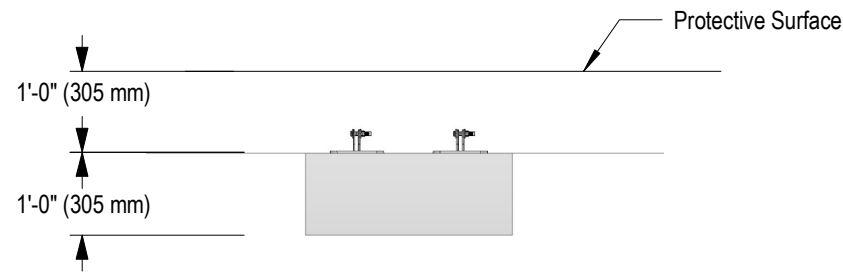
PLAN VIEW



SIDE VIEW, FT-1



SIDE VIEW, FT-2



SIDE VIEW, FT-3

Footing List		
PART NO.:	DESCRIPTION	QTY
FT-1	3' x 3' x 2' (915mm x 915mm x 620mm)	4
FT-2	1' x 1' x 2' (305mm x 305mm x 610mm)	1
FT-3	1' x 2' - 6\" x 1' (305mm x 760mm x 305mm)	1