

Product Name	Two Towers Large
Product Number	DX-203
Size -- Length	27.70 m / 90' 11"
Size -- Width	17.20 m / 56' 5"
Size -- Height	7.50 m / 24' 7"
Shipping Weight	890 kg / 1962.1 lb
Shipping Volume	2.90 m <sup>3</sup> / 102.4 ft <sup>3</sup>
Foundations	8
Concrete Volume	7.63 m <sup>3</sup> / 269.5 ft <sup>3</sup>

	<b>ASTM F-1487</b>	<b>CSA Z614</b>	<b>EN 1176</b>
Ages	5 years - 12 years	5 years - 12 years	6 years - 12 years
Capacity	217	217	217
Use Zone -- Length	31.36 m / 102' 11"	31.36 m / 102' 11"	30.70 m / 100' 9"
Use Zone -- Width	20.86 m / 68' 5"	20.86 m / 68' 5"	20.20 m / 66' 3"
Fall Height	2.20 m / 7' 3"	2.20 m / 7' 3"	1.13 m / 3' 8"

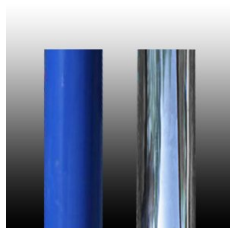
\*Note: Concrete must be minimum 3500 PSI / 25MPa



## Product Features:

<b>SUPPORT POSTS:</b>	This will be 5 1/2" (139.8mm) OD galvanized steel tubing, finished with polyester powder coating.
<b>POST SHIELDS:</b>	Where required, these will completely surround the post to fill in openings in the net, preventing entrapments. Shields will be made of a textile-reinforced flexible rubber material and secured with bolts.
<b>CLIMBING NETS:</b>	This will be 20mm diameter and 22mm diameter, polyamide (nylon) rope cable with UV protection and fire retardant solution. Each rope consists of 6 strands each containing 24 steel reinforcing strands within a polyamide sleeve, wrapped around a solid polyamide core for a total of 144 steel reinforcing strands; each end of the cable having a junction loop attached onto the cable with a finished aluminum sleeve and lined with a galvanized steel wear bar. Edge ropes will contain a solid core of wound steel cables in place of the polyamide core for a total of 168 steel reinforcing strands. Rope shall achieve a Class 7-8 Colourfastness rating.
<b>BALL KNOTS:</b>	This will be a one-piece compressed aluminum ball, compressed in place with 150,000 pounds force (667 kN) to prevent the connection from moving and causing premature cable wear.
<b>BASIC FASTENERS:</b>	All fasteners for component attachments are stainless steel.
<b>TURNBUCKLES:</b>	These will be steel alloy that will withstand a maximum load of over 87,675 pounds force (390 kN) along the main axis.

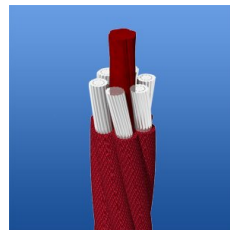
- MOUNTING PLATES:** These will be made of galvanized steel. Corner anchors will contain multiple connection points to allow for adjustability of the turnbuckles as well as connection of a safety rope. Centre mast anchors will consist of a stub post that will stabilize the mast and an anchor ring that will secure the assembly to the concrete. This two-piece assembly allows for fine positioning of the post stub to be accomplished during installation, making the process simpler and easier.
- ANCHOR BOLTS:** Mounting plates will be secured to concrete blocks with 7/8" (22mm) diameter x 20" (500mm) long "L" Anchor bolts, inserted into the wet concrete when poured.
- INSTALLATION:** This should be installed only by a licensed playground installer, trained and certified on the relevant playground standards in place in the region of installation, e.g., NPSI, CPSI or similar certified.
- COMPLIANT WITH:** **CAN/CSA-Z614-07**  
**ASTM F-1487-11**  
**EN-1176**  
**CPSI Handbook for Public Playground Safety**
- TÜV CERTIFIED:** Certified to EN 1176:2008 TÜV Rhineland Certificate N° AK50162502
- IPEMA CERTIFIED:** The DX-203 identified in this specification sheet is IPEMA certified. The use and layout of the DX-203 conforms to the requirements of ASTM F1487 and CSA Z614. To verify product certification visit [www.ipema.org](http://www.ipema.org).
- OPTIONS:** Optional Equipment:
- Net Seat (Max. Qty: 8) #DX-NS
  - Poured-In-Place Enclosure (Max. Qty: 6) #DX-PIP-01
  - Polished Stainless Steel Post (Max. Qty: 2) #SS-POST



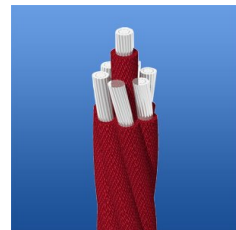
Support Posts



Seat & Shield Connector



Climbing Net - 20 mm



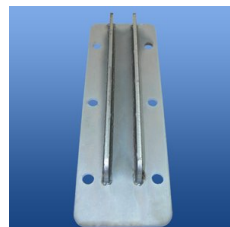
Climbing Net - 22 mm



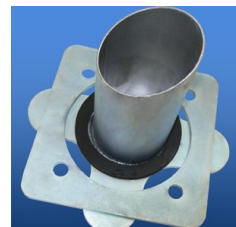
Ball Knot



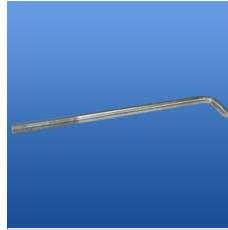
Turnbuckle



Corner Anchor Plate



Adjustable Centre Anchor



Anchor Bolt