

Product Name	Nebula Mini II
Product Number	DX-916
Size -- Length	6.14 m / 20' 2"
Size -- Width	0.66 m / 2' 2"
Size -- Height	3.07 m / 10' 1"
Foundations	2
Concrete Volume	1.60 m <sup>3</sup> / 56.5 ft <sup>3</sup>

	<b>ASTM F-1487</b>	<b>CSA Z614</b>	<b>EN 1176</b>
Ages	5 years - 12 years	5 years - 12 years	6 years - 12 years
Capacity	24	24	24
Use Zone -- Length	9.80 m / 32' 2"	9.80 m / 32' 2"	9.14 m / 30' 0"
Use Zone -- Width	4.42 m / 14' 6"	4.36 m / 14' 4"	3.76 m / 12' 4"
Fall Height	0.71 m / 2' 4"	0.71 m / 2' 4"	0.71 m / 2' 4"

\*Note: Concrete must be minimum 3500 PSI / 25MPa

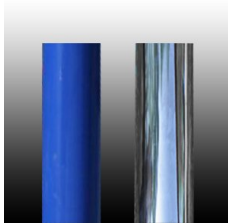


## Product Features:

<b>SUPPORT POSTS:</b>	This will be 5 1/2" (139.8mm) OD phosphate dipped steel tubing, finished with polyester powder coating.
<b>CLIMBING NETS:</b>	These will be 20 mm diameter, polyamide (nylon) rope cable with UV protection and fire retardant solution. Each rope consists of 6 strands each containing 24 galvanized steel reinforcing strands within a polyamide sleeve, wrapped around a solid polyamide core for a total of 144 steel reinforcing strands; each end of the cable having a junction loop attached onto the cable with a finished aluminum sleeve and lined with a galvanized steel wear bar. Rope shall achieve a Class 7-8 Colourfastness rating.
<b>RUNGS:</b>	These will be 2 3/8" (60mm) OD aluminum pipe. Female igloo connectors will be welded to the surface for connecting with the ropes.
<b>BASIC FASTENERS:</b>	All fasteners for component attachments are stainless steel.
<b>CORNER ANCHOR FOUNDATION:</b>	These will be 19 11/16" (500mm) square steel plates, 3/8" (9mm) thick, welded to the support post with reinforcing ribs, and bolted to concrete blocks. All steel is finished with polyester powder coating.
<b>SURFACE MOUNT:</b>	This product will be surface mounted utilizing 6" (150mm) long expansion bolts.
<b>INSTALLATION:</b>	This should be installed only by a licensed playground installer, trained and certified on the relevant playground standards in place in the region of installation, e.g., NPSI, CPSI or similar certified.

COMPLIANT WITH:

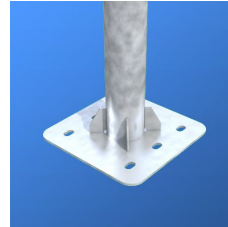
**CAN/CSA-Z614**  
**ASTM F-1487**  
**EN-1176**  
**CPSC Handbook for Public Playground Safety**



Support Posts



Climbing Net - 20 mm



Corner Anchor Foundation



Expansion Bolt