

Product Name	Nebula Mini I
Product Number	DX-915
Size -- Length	6.14 m / 20' 2"
Size -- Width	0.76 m / 2' 6"
Size -- Height	3.07 m / 10' 1"
Shipping Weight	370 kg / 815.7 lb
Shipping Volume	2.09 m ³ / 73.8 ft ³
Foundations	2
Concrete Volume	1.60 m ³ / 56.5 ft ³

	ASTM F-1487	CSA Z614	EN 1176
Ages	5 years - 12 years	5 years - 12 years	6 years - 12 years
Capacity	15	15	15
Use Zone -- Length	9.80 m / 32' 2"	9.80 m / 32' 2"	9.14 m / 30' 0"
Use Zone -- Width	4.42 m / 14' 6"	4.42 m / 14' 6"	3.76 m / 12' 4"
Fall Height	1.36 m / 4' 6"	1.36 m / 4' 6"	1.36 m / 4' 6"

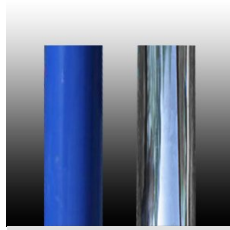
*Note: Concrete must be minimum 3500 PSI / 25MPa



Product Features:

SUPPORT POSTS:	This will be 5 1/2" (139.8mm) OD phosphate dipped steel tubing, finished with polyester powder coating.
CLIMBING NETS:	These will be 20 mm diameter, polyamide (nylon) rope cable with UV protection and fire retardant solution. Each rope consists of 6 strands each containing 24 galvanized steel reinforcing strands within a polyamide sleeve, wrapped around a solid polyamide core for a total of 144 steel reinforcing strands; each end of the cable having a junction loop attached onto the cable with a finished aluminum sleeve and lined with a galvanized steel wear bar. Rope shall achieve a Class 7-8 Colourfastness rating.
BALL KNOTS:	This will be a one-piece compressed aluminum ball, compressed in place with 150,000 pounds force (667 kN) to prevent the connection from moving and causing premature cable wear.
BASIC FASTENERS:	All fasteners for component attachments are stainless steel.
CORNER ANCHOR FOUNDATION:	These will be 19 11/16" (500mm) square steel plates, 3/8" (9mm) thick, welded to the support post with reinforcing ribs, and bolted to concrete blocks. All steel is finished with hot dipped galvanization.
ANCHOR BOLTS:	Mounting plates will be secured to concrete blocks with 7/8" (22mm) diameter x 20" (500mm) long "L" Anchor bolts, inserted into the wet concrete when poured.

- SURFACE MOUNT:** Optionally, the product may be surface mounted utilizing 6" (150mm) long expansion bolts in place of the standard anchor bolts.
- INSTALLATION:** This should be installed only by a licensed playground installer, trained and certified on the relevant playground standards in place in the region of installation, e.g., NPSI, CPSI or similar certified.
- COMPLIANT WITH:**
CAN/CSA-Z614-14
ASTM F-1487-11
EN-1176
CPSC Handbook for Public Playground Safety



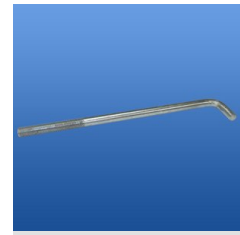
Support Posts



Climbing Net - 20 mm



Ball Knot



Anchor Bolt



Expansion Bolt