

Product Name	Courtyard with Features
Product Number	CPT-1006
Size -- Length	28.63 m / 93' 11"
Size -- Width	28.63 m / 93' 11"
Size -- Height	7.50 m / 24' 7"
Shipping Weight	3276 kg / 7222.3 lb
Shipping Volume	28.48 m <sup>3</sup> / 1005.8 ft <sup>3</sup>
Foundations	43
Concrete Volume	15.19 m <sup>3</sup> / 536.4 ft <sup>3</sup>

	<b>ASTM F-1487</b>	<b>CSA Z614</b>	<b>EN 1176</b>
Ages	5 years - 12 years	5 years - 12 years	6 years - 12 years
Capacity	240	240	240
Use Zone -- Length	32.46 m / 106' 6"	32.46 m / 106' 6"	31.99 m / 104' 11"
Use Zone -- Width	32.46 m / 106' 6"	32.46 m / 106' 6"	31.99 m / 104' 11"
Fall Height	2.20 m / 7' 3"	2.20 m / 7' 3"	1.60 m / 5' 3"

\*Note: Concrete must be minimum 3500 PSI / 25MPa

## Product Features:

- SUPPORT POSTS:** This will be 5 1/2" (139.8mm) OD phosphate dipped steel tubing, finished with polyester powder coating.
- POST SHIELDS:** Where required, these will completely surround the post to fill in openings in the net, preventing entrapments. Shields will be made of a textile-reinforced flexible rubber material and secured with bolts.
- CLIMBING NETS:** This will be 20mm diameter and 22mm diameter, polyamide (nylon) rope cable with UV protection and fire retardant solution. Each rope consists of 6 strands each containing 24 steel reinforcing strands within a polyamide sleeve, wrapped around a solid polyamide core for a total of 144 steel reinforcing strands; each end of the cable having a junction loop attached onto the cable with a finished aluminum sleeve and lined with a galvanized steel wear bar. Edge ropes will contain a solid core of wound steel cables in place of the polyamide core for a total of 168 steel reinforcing strands. Rope shall achieve a Class 7-8 Colourfastness rating.
- SLIDE MATERIAL:** This will be UV protected LLDPE (linear low-density polyethylene).
- BALL KNOTS:** This will be a one-piece compressed aluminum ball, compressed in place with 150,000 pounds force (667 kN) to prevent the connection from moving and causing premature cable wear.
- CENTER MAT SURFACE:** This will be 1/2" (13mm) thick textile-reinforced rubber mat with drainage holes secured to the surrounding cable with two-piece, high strength plastic connectors which are rubber lined to reduce rope wear.
- BASIC FASTENERS:** All fasteners for component attachments are stainless steel.
- TURNBUCKLES:** These will be steel alloy that will withstand a maximum load of over 87,675 pounds force (390 kN) along the main axis.

**MOUNTING PLATES:**

These will be made of galvanized steel. Corner anchors will contain multiple connection points to allow for adjustability of the turnbuckles as well as connection of a safety rope. Centre mast anchors will consist of a stub post that will stabilize the mast and an anchor ring that will secure the assembly to the concrete. This two-piece assembly allows for fine positioning of the post stub to be accomplished during installation, making the process simpler and easier.

**ANCHOR BOLTS:**

Mounting plates will be secured to concrete blocks with 7/8" (22mm) diameter x 20" (500mm) long "L" Anchor bolts, inserted into the wet concrete when poured.

**SURFACE MOUNT:**

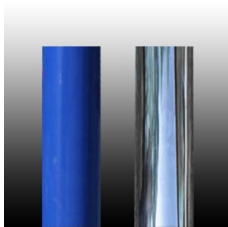
This product will be surface mounted utilizing 6" (150mm) long expansion bolts.

**INSTALLATION:**

This should be installed only by a licensed playground installer, trained and certified on the relevant playground standards in place in the region of installation, e.g., NPSI, CPSI or similar certified.

**COMPLIANT WITH:**

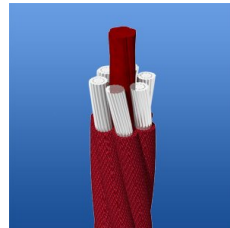
**CAN/CSA-Z614-07**  
**ASTM F-1487-11**  
**EN-1176**  
**CPSI Handbook for Public Playground Safety**



Support Posts



Seat & Shield Connector



Climbing Net - 20 mm



Climbing Net - 22 mm



Ball Knot



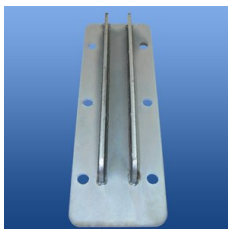
Jumping Surface Material



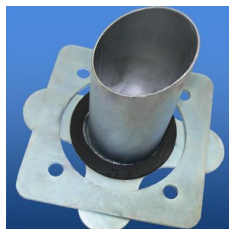
Jumping Surface Connector



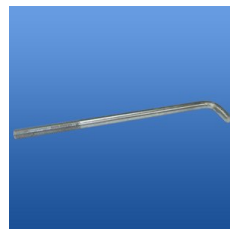
Turnbuckle



Corner Anchor Plate



Adjustable Centre Anchor



Anchor Bolt



Expansion Bolt