

Product Name	Meteor Large with Fort and Slide
Product Number	CPT-1011
Size -- Length	9.64 m / 31' 8"
Size -- Width	6.54 m / 21' 5"
Size -- Height	6.40 m / 21' 0"
Foundations	11
Concrete Volume	3.34 m ³ / 118.0 ft ³

	ASTM F-1487	CSA Z614	EN 1176
Ages	5 years - 12 years	5 years - 12 years	6 years - 12 years
Capacity	80	80	80
Use Zone -- Length	13.15 m / 43' 2"	13.15 m / 43' 2"	12.49 m / 41' 0"
Use Zone -- Width	10.91 m / 35' 10"	10.91 m / 35' 10"	10.25 m / 33' 8"
No-Encroachment Zone	Not Applicable	1.80 m / 5' 11"	Not Applicable

*Note: Concrete must be minimum 3500 PSI / 25MPa

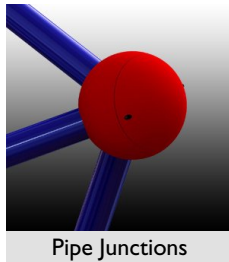
Product Features:

SUPPORT POSTS:	These will be 2 3/8" (60.5mm) OD phosphate dipped steel tubing, finished with polyester powder coating.
PIPE JUNCTIONS:	These will be cast aluminum, 5/8" (16mm) wall thickness, 8" (200mm) diameter with integrated holes for pipe connections, finished with polyester powder coating. Junction caps are affixed with stainless steel bolts.
CLIMBING NETS:	These will be 20 mm diameter, polyamide (nylon) rope cable with UV protection and fire retardant solution. Each rope consists of 6 strands each containing 24 galvanized steel reinforcing strands within a polyamide sleeve, wrapped around a solid polyamide core for a total of 144 steel reinforcing strands; each end of the cable having a junction loop attached onto the cable with a finished aluminum sleeve and lined with a galvanized steel wear bar. Rope shall achieve a Class 7-8 Colourfastness rating.
SLIDE MATERIAL:	This will be either UV protected LLDPE (linear low-density polyethylene) or stainless steel.
DECKING:	This will be constructed of custom cut 3/16" (5mm) thick punched steel decking with 2" (50mm) angle frame, 3/16" (5mm) thick, welded perpendicular to the deck surface for support. Deck sections are dipped in a phthalate-free PVC coating.
BALL KNOTS:	This will be a one-piece compressed aluminum ball, compressed in place with 150,000 pounds force (667 kN) to prevent the connection from moving and causing premature cable wear.
TENSIONING:	Tensioning is achieved by way of a galvanized threaded eyebolt and shackle located at each Pipe Connection capable of drawing the cables a minimum of 4" (100mm).
BASIC FASTENERS:	All fasteners for component attachments are stainless steel.

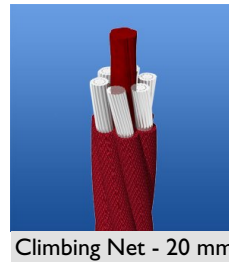
- FOUNDATION:** These will be 10" (250mm) square steel plates, 1/8" (3mm) thick, bolted to concrete blocks and attached to the main structure with 12" (300mm) long, 2 3/8" (60.5mm) OD steel tubing, all finished with either polyester powder coating or hot dipped galvanization.
- ANCHOR BOLTS:** Mounting plates will be secured to concrete blocks with 7/8" (22mm) diameter x 20" (500mm) long "L" Anchor bolts, inserted into the wet concrete when poured.
- SURFACE MOUNT:** Optionally, the product may be surface mounted utilizing 6" (150mm) long expansion bolts in place of the standard anchor bolts.
- INSTALLATION:** This should be installed only by a licensed playground installer, trained and certified on the relevant playground standards in place in the region of installation, e.g., NPSI, CPSI or similar certified.
- COMPLIANT WITH:** **CAN/CSA-Z614**
ASTM F-1487
EN-1176
CPSI Handbook for Public Playground Safety
- TÜV CERTIFIED:** Certified to EN 1176:2008 TÜV Rhineland Certificate N° AK50162522



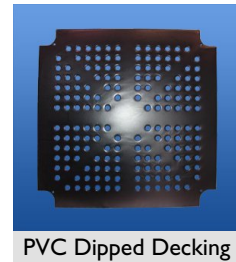
Support Posts



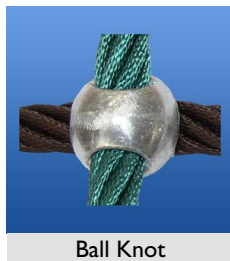
Pipe Junctions



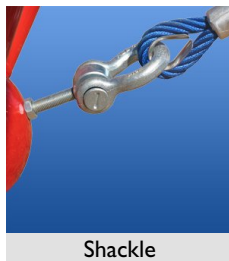
Climbing Net - 20 mm



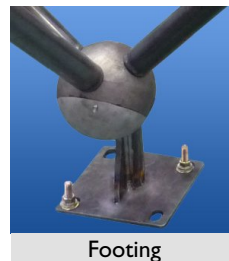
PVC Dipped Decking



Ball Knot



Shackle



Footing



Anchor Bolt



Expansion Bolt