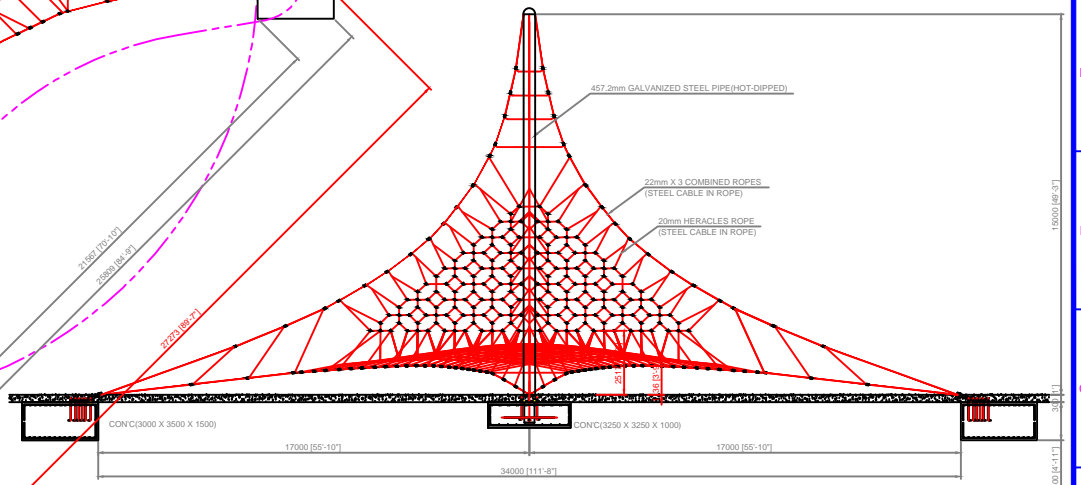
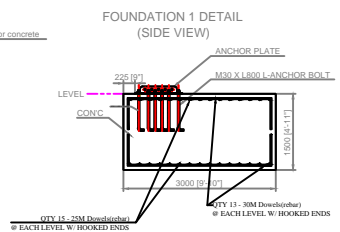
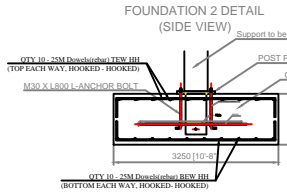
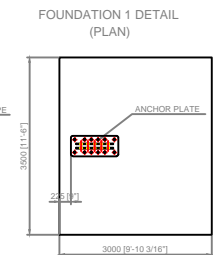
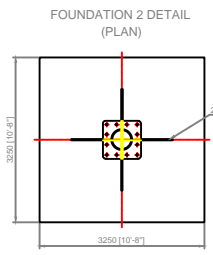
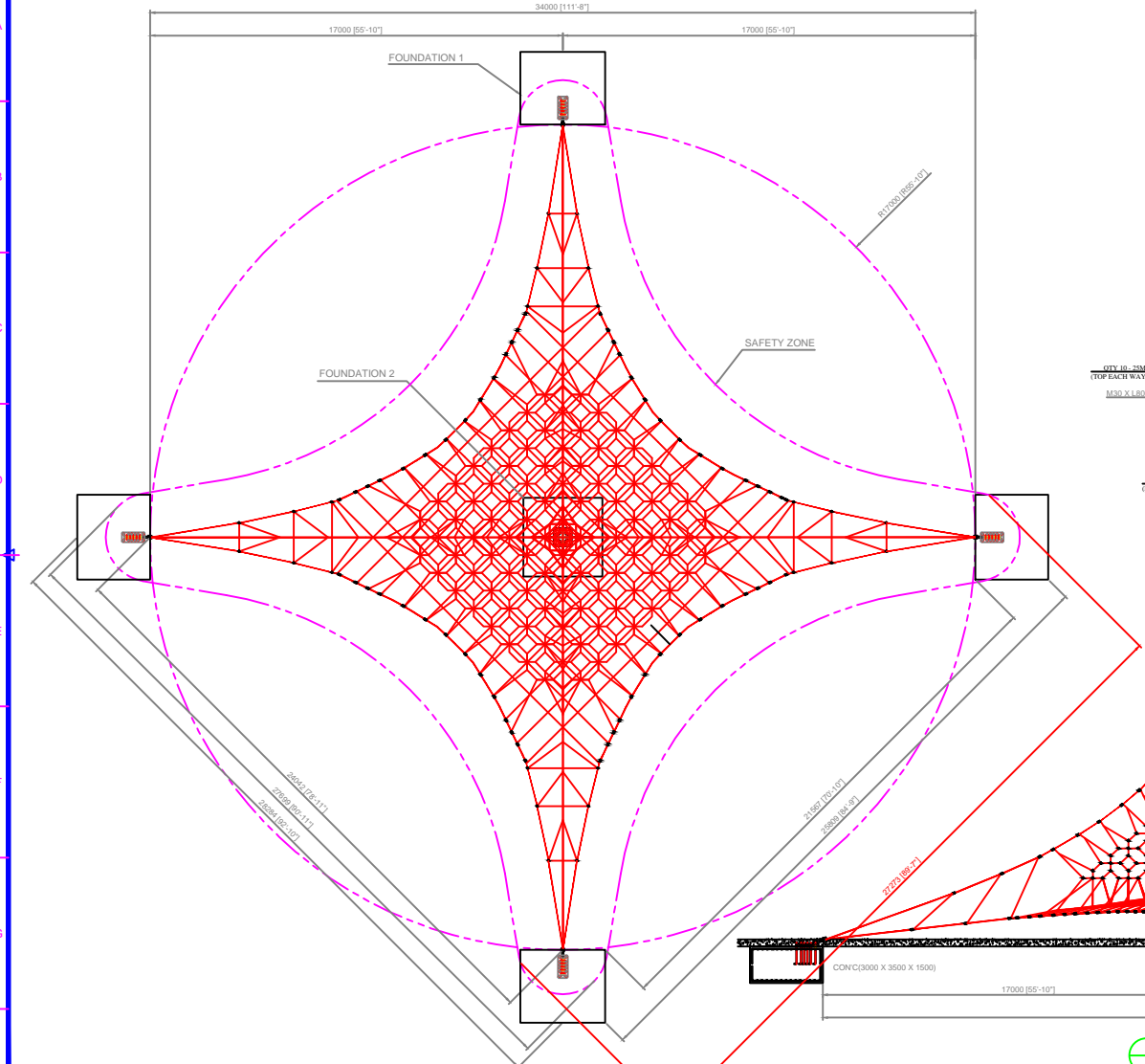


RevNo	Revision note	Date	Signature	Checked



LAYOUT DRAWING SCALE 1/90

FRONT VIEW SCALE 1/90

- Notes:**
- Site soil conditions and bearing capacity shall be reviewed and approved by a geotechnical engineer prior to construction.
 - Minimum required allowable bearing capacity 150KPA
 - Minimum 28 day concrete strength = 30MPA
 - All steel to be a minimum grade of SS400
 - Reinforcing steel shall be deformed grade 400 or equivalent.

 www.dynamoplayarounds.com	Item#	Quantity	Title/Name, designation, material, dimension etc	Article No./Reference
	Designed by Kerry Lee	Checked by G.McCormick	Approved by - date GM-12/08/13	Filename DX-108.dwg
GENESIS XXXL				Scale 1:30
1-B				Sheet 1/1