

Product Name	Biggo Tres Duo
Product Number	DX-3253
Size -- Width	7.12 m / 23' 4"
Size -- Height	3.53 m / 11' 7"
Shipping Weight	640 kg / 1411.0 lb
Shipping Volume	2.50 m ³ / 88.3 ft ³
Foundations	1
Concrete Volume	1.59 m ³ / 56.2 ft ³



	ASTM F-1487	CSA Z614	EN 1176
Ages	5 years - 12 years	5 years - 12 years	6 years - 12 years
Capacity	8	8	8
Use Zone -- Length	8.41 m / 27' 7"	9.50 m / 31' 2"	8.62 m / 28' 3"
Use Zone -- Width	14.95 m / 49' 1"	16.02 m / 52' 7"	15.16 m / 49' 9"
Fall Height	2.95 m / 9' 8"	2.95 m / 9' 8"	1.76 m / 5' 9"
No-Encroachment Zone	Not Applicable	1.80 m / 5' 11"	Not Applicable

*Note: Concrete must be minimum 3500 PSI / 25MPa

Product Features:

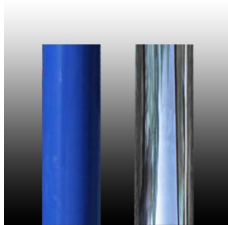
SUPPORT POST:	This will be 10 1/2" (267mm) OD Schedule 60 galvanized steel tubing.
SUPPORT ARMS:	This will be 6 1/2" (165mm) OD Schedule 80 galvanized steel tubing.
U-JOINT SWIVEL:	This will be a stainless steel universal joint swivel with a 5 piece ball bearing system working in conjunction with a 2 piece thrust bearing system.
SUSPENSION CHAIN:	This will be 8 mm galvanized steel chain. Each chain will have independent connections at seat and pivot.
SEAT CONNECTION:	The seat will be connected to the chain at four points, each by a one-piece machined stainless steel sleeve with tamper-resistant bolts. (Patent Pending)
SEAT BUMPER:	This will be 3 1/2" (90mm) OD textile reinforced high-pressure rubber hose, containing no external dye markings and covered with a wear and soil resistant surface.
BIGGO™ TRES SEAT:	This will be a one-piece aluminum bowl with seat bumper. Two additional bumper rings will be suspended between the seat and the suspension chain. Each suspended bumper will be held in place with with four 20 mm rope sections.
BASIC FASTENERS:	All fasteners for component attachments are stainless steel.
INSTALLATION:	This should be installed only by a licensed playground installer, trained and certified on the relevant playground standards in place in the region of installation, e.g., NPSI, CPSI or similar certified.
NO-ENCROACHMENT ZONE:	Where required, this will be an obstacle-free zone that does not necessarily meet the requirements of the protective surfacing zone. See applicable standard for more information.

COMPLIANT WITH:

CAN/CSA-Z614-07
ASTM F-1487-11
EN-1176
CPSC Handbook for Public Playground Safety



† Where proper surfacing is used, this product meets the ADAAG guidelines for accessibility, allowing the same play possibilities for people of all abilities.



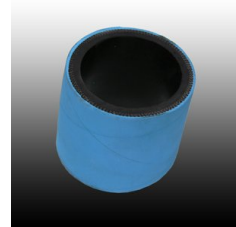
Support Posts



Galvanized Steel Chain



Biggo Seat Connector



Biggo Bumper