

Product Name	SM AtomNet TS
Product Number	DX-SM04
Size -- Length	4.20 m / 13' 9"
Size -- Width	4.20 m / 13' 9"
Size -- Height	3.90 m / 12' 10"
Shipping Weight	340 kg / 749.6 lb
Shipping Volume	1.10 m ³ / 38.8 ft ³
Foundations	5
Concrete Volume	2.49 m ³ / 87.9 ft ³

	ASTM F-1487	CSA Z614	EN 1176
Ages	2 years - 5 years	18 months - 5 years	2 years - 6 years
Capacity	15	15	15
Use Zone -- Length	7.90 m / 25' 11"	7.90 m / 25' 11"	7.30 m / 23' 11"
Use Zone -- Width	7.90 m / 25' 11"	7.90 m / 25' 11"	7.30 m / 23' 11"
Fall Height	2.50 m / 8' 2"	2.50 m / 8' 2"	0.43 m / 1' 5"

*Note: Concrete must be minimum 3500 PSI / 25MPa

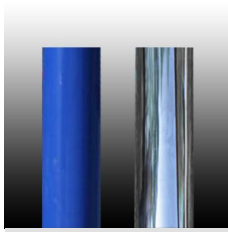
Product Features:

SUPPORT POSTS:	This will be 5 1/2" (139.8mm) OD galvanized steel tubing, finished with polyester powder coating.
POST SHIELDS:	Where required, these will completely surround the post to fill in openings in the net, preventing entrapments. Shields will be made of a textile-reinforced flexible rubber material and secured with bolts.
CLIMBING NETS:	These will be 20 mm diameter, polyamide (nylon) rope cable with UV protection and fire retardant solution. Each rope consists of 6 strands each containing 24 galvanized steel reinforcing strands within a polyamide sleeve, wrapped around a solid polyamide core for a total of 144 steel reinforcing strands; each end of the cable having a junction loop attached onto the cable with a finished aluminum sleeve and lined with a galvanized steel wear bar. Rope shall achieve a Class 7-8 Colourfastness rating.
BALL KNOTS:	This will be a one-piece compressed aluminum ball, compressed in place with 150,000 pounds force (667 kN) to prevent the connection from moving and causing premature cable wear.
BASIC FASTENERS:	All fasteners for component attachments are stainless steel.
TURNBUCKLES:	These will be steel alloy that will withstand a maximum load of over 87,675 pounds force (390 kN) along the main axis.
MOUNTING PLATES:	These will be made of galvanized steel. Corner anchors will contain multiple connection points to allow for adjustability of the turnbuckles as well as connection of a safety rope. Centre mast anchors will consist of a stub post that will stabilize the mast and an anchor ring that will secure the assembly to the concrete. This two-piece assembly allows for fine positioning of the post stub to be accomplished during installation, making the process simpler and easier.

ANCHOR BOLTS: Mounting plates will be secured to concrete blocks with 7/8" (22mm) diameter x 20" (500mm) long "L" Anchor bolts, inserted into the wet concrete when poured.

INSTALLATION: This should be installed only by a licensed playground installer, trained and certified on the relevant playground standards in place in the region of installation, e.g., NPSI, CPSI or similar certified.

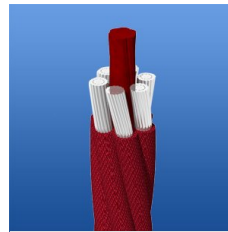
COMPLIANT WITH: **CAN/CSA-Z614-07**
ASTM F-1487-11
EN-1176
CPSC Handbook for Public Playground Safety



Support Posts



Seat & Shield Connector



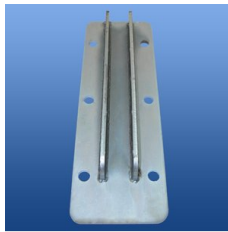
Climbing Net - 20 mm



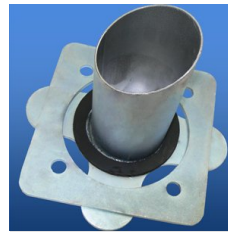
Ball Knot



Turnbuckle



Corner Anchor Plate



Adjustable Centre Anchor



Anchor Bolt