

Product Name	Biggo Spia Duo
Product Number	DX-3275
Size -- Width	5.64 m / 18' 6"
Size -- Height	2.27 m / 7' 5"
Shipping Weight	545 kg / 1201.5 lb
Shipping Volume	4.08 m ³ / 144.1 ft ³
Foundations	3
Concrete Volume	0.88 m ³ / 31.1 ft ³

	ASTM F-1487	CSA Z614	EN 1176
Ages	2 years - 12 years	18 months - 12 years	2 years - 12 years
Capacity	8	8	8
Use Zone -- Length	8.14 m / 26' 8"	6.75 m / 22' 2"	7.43 m / 24' 5"
Use Zone -- Width	9.46 m / 31' 0"	9.46 m / 31' 0"	8.80 m / 28' 10"
Use Zone -- Area	57.96 m ² / 623.9 ft ²	68.13 m ² / 733.3 ft ²	42.54 m ² / 457.9 ft ²
Fall Height	2.04 m / 6' 8"	2.04 m / 6' 8"	1.19 m / 3' 11"
No-Encroachment Zone	Not Applicable	1.80 m / 5' 11"	Not Applicable

*Note: Concrete must be minimum 3500 PSI / 25MPa



To verify product certification, visit www.ipema.org

To verify product certification, visit www.ipema.org



Product Features:

- SUPPORT POSTS:** This will be 5 9/16" (141.3mm) OD Schedule 40 steel pipe.
- SWIVEL CONNECTOR:** This will be an aluminum swivel connector with a low friction and high abrasion resistant UHMWPE bushing and tamper-resistant attachments. The aluminum swivel will have a smooth machine finish.
- SUSPENSION CHAIN:** This will be either 5/16" (8 mm) galvanized steel chain. Each chain will have independent connections at seat and pivot.
- SEAT CONNECTION:** The seat will be connected to the chain at four points, each by a one-piece machined stainless steel sleeve. (Patent Pending)
- SEAT BUMPER:** This will be 3 1/2" (90mm) OD textile reinforced high-pressure rubber hose, containing no external dye markings and covered with a wear and soil resistant surface.
- BIGGO™ SEAT:** This will be a one-piece aluminum bowl, weighing with its bumper and pieces no more than 42 lbs (19 kg) empty.
- BASIC FASTENERS:** All fasteners for component attachments are stainless steel.
- PAINT PROCESS:** All exposed steel will be finished with polyester powder coating unless otherwise specified. Prior to the powder coating application, the surface will undergo sand blasting and will be treated with a zinc rich epoxy primer having a minimum thickness of 1.5 mils.

INSTALLATION: This should be installed only by a licensed playground installer, trained and certified on the relevant playground standards in place in the region of installation, e.g., NPSI, CPSI or similar certified.

NO-ENCROACHMENT ZONE: Where required, this will be an obstacle-free zone that does not necessarily meet the requirements of the protective surfacing zone. See applicable standard for more information.

COMPLIANT WITH: **CAN/CSA-Z614**
ASTM F-1487
EN-1176
CPSC Handbook for Public Playground Safety

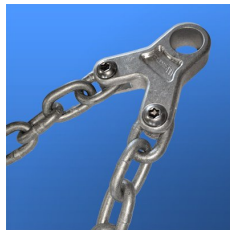
TÜV CERTIFIED: Certified to EN 1176:2008 TÜV SÜD Certificate N° Z1 13 08 84504 002

IPEMA CERTIFIED: The DX-3275 identified in this specification sheet is IPEMA certified. The use and layout of the DX-3275 conforms to the requirements of ASTM F1487 and CSA Z614. To verify product certification visit www.ipema.org.



† Where proper surfacing is used, this product meets the ADAAG guidelines for accessibility, allowing the same play possibilities for people of all abilities.

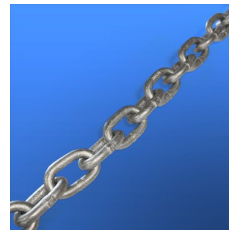
OPTIONS: Optional Equipment:
· Polished Stainless Steel Post (Max. Qty: 3) #SS-POST



Swivel Connector



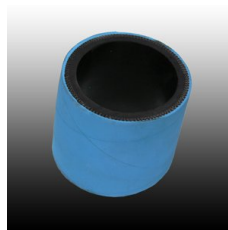
UHMWPE Bushing



Galvanized Steel Chain



Biggo Seat Connector



Biggo Bumper