

Product Name	Biggo Ovni Duo
Product Number	DX-3250
Size -- Width	7.12 m / 23' 4"
Size -- Height	3.53 m / 11' 7"
Shipping Weight	600 kg / 1322.8 lb
Shipping Volume	2.50 m ³ / 88.3 ft ³
Foundations	1
Concrete Volume	1.59 m ³ / 56.2 ft ³

	ASTM F-1487	CSA Z614	EN 1176
Ages	5 years - 12 years	5 years - 12 years	6 years - 12 years
Capacity	8	8	8
Use Zone -- Length	8.65 m / 28' 5"	9.52 m / 31' 3"	8.90 m / 29' 2"
Use Zone -- Width	15.19 m / 49' 10"	16.06 m / 52' 8"	15.44 m / 50' 8"
Use Zone -- Area	109.39 m ² / 1177.5 ft ²	217.40 m ² / 2340.1 ft ²	114.72 m ² / 1234.8 ft ²
Fall Height	2.95 m / 9' 8"	2.95 m / 9' 8"	1.76 m / 5' 9"
No-Encroachment Zone	Not Applicable	1.80 m / 5' 11"	Not Applicable

*Note: Concrete must be minimum 3500 PSI / 25MPa



To verify product certification, visit www.ipema.org



To verify product certification, visit www.ipema.org



Product Features:

SUPPORT POST:	This will be 10 3/4" (273mm) OD Schedule 60 steel tubing.
SUPPORT ARMS:	This will be 6 1/2" (165mm) OD Schedule 80 steel tubing.
U-JOINT SWIVEL:	This will be a stainless steel universal joint swivel with a 5 piece ball bearing system working in conjunction with a 2 piece thrust bearing system.
SUSPENSION CHAIN:	This will be either 5/16" (8 mm) galvanized steel chain. Each chain will have independent connections at seat and pivot.
SEAT CONNECTION:	The seat will be connected to the chain at four points, each by a one-piece machined stainless steel sleeve. (Patent Pending)
SEAT BUMPER:	This will be 3 1/2" (90mm) OD textile reinforced high-pressure rubber hose, containing no external dye markings and covered with a wear and soil resistant surface.
BIGGO™ SEAT:	This will be a one-piece aluminum bowl, weighing with its bumper and pieces no more than 42 lbs (19 kg) empty.
BASIC FASTENERS:	All fasteners for component attachments are stainless steel.

PAINT PROCESS:	All exposed steel will be finished with polyester powder coating unless otherwise specified. Prior to the powder coating application, the surface will undergo sand blasting and will be treated with a zinc rich epoxy primer having a minimum thickness of 1.5 mils.
INSTALLATION:	This should be installed only by a licensed playground installer, trained and certified on the relevant playground standards in place in the region of installation, e.g., NPSI, CPSI or similar certified.
NO-ENCROACHMENT ZONE:	Where required, this will be an obstacle-free zone that does not necessarily meet the requirements of the protective surfacing zone. See applicable standard for more information.
COMPLIANT WITH:	CAN/CSA-Z614 ASTM F-1487 EN-1176 Cpsc Handbook for Public Playground Safety
TÜV CERTIFIED:	Certified to EN 1176:2008 TÜV SÜD Certificate N° Z1 13 08 84504 002
IPEMA CERTIFIED:	The DX-3250 identified in this specification sheet is IPEMA certified. The use and layout of the DX-3250 conforms to the requirements of ASTM F1487 and CSA Z614. To verify product certification visit www.ipema.org .



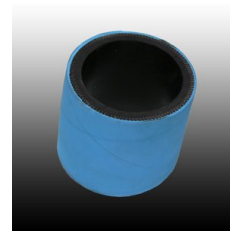
† Where proper surfacing is used, this product meets the ADAAG guidelines for accessibility, allowing the same play possibilities for people of all abilities.



Galvanized Steel Chain



Biggo Seat Connector



Biggo Bumper