

Product Family	SM AtomNet Courtyard
Product Number	DX-SM02-4C
Size -- Length	10.20 m / 33' 6"
Size -- Width	10.20 m / 33' 6"
Size -- Height	2.70 m / 8' 10"
Shipping Weight	1000 kg / 2204.6 lb
Shipping Volume	3.40 m <sup>3</sup> / 120.1 ft <sup>3</sup>
Foundations	12
Concrete Volume	5.49 m <sup>3</sup> / 193.9 ft <sup>3</sup>

	<b>ASTM F-1487</b>	<b>CSA Z614</b>	<b>EN 1176</b>
Ages	2 years - 5 years	18 months - 5 years	2 years - 6 years
Capacity	42	42	42
Use Zone -- Length	13.86 m / 45' 6"	13.86 m / 45' 6"	13.26 m / 43' 6"
Use Zone -- Width	13.86 m / 45' 6"	13.86 m / 45' 6"	13.26 m / 43' 6"
Fall Height	1.50 m / 4' 11"	1.50 m / 4' 11"	0.30 m / 1' 0"

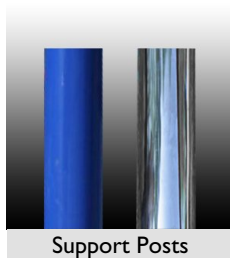
\*Note: Concrete must be minimum 3500 PSI / 25MPa



## Product Features:

<b>SUPPORT POSTS:</b>	This will be 5 1/2" (139.8mm) OD galvanized steel tubing, finished with polyester powder coating.
<b>POST SHIELDS:</b>	Where required, these will completely surround the post to fill in openings in the net, preventing entrapments. Shields will be made of a textile-reinforced flexible rubber material and secured with bolts.
<b>CLIMBING NETS:</b>	These will be 20 mm diameter, polyamide (nylon) rope cable with UV protection and fire retardant solution. Each rope consists of 6 strands each containing 24 galvanized steel reinforcing strands within a polyamide sleeve, wrapped around a solid polyamide core for a total of 144 steel reinforcing strands; each end of the cable having a junction loop attached onto the cable with a finished aluminum sleeve and lined with a galvanized steel wear bar. Rope shall achieve a Class 7-8 Colourfastness rating.
<b>BALL KNOTS:</b>	This will be a one-piece compressed aluminum ball, compressed in place with 150,000 pounds force (667 kN) to prevent the connection from moving and causing premature cable wear.
<b>CENTER MAT SURFACE:</b>	This will be 1/2" (13mm) thick textile-reinforced rubber mat with drainage holes secured to the surrounding cable with two-piece, high strength plastic connectors which are rubber lined to reduce rope wear.
<b>BASIC FASTENERS:</b>	All fasteners for component attachments are stainless steel.
<b>TURNBUCKLES:</b>	These will be steel alloy that will withstand a maximum load of over 87,675 pounds force (390 kN) along the main axis.

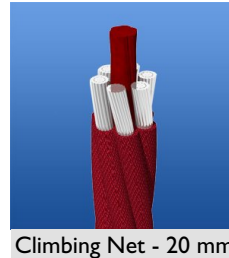
- MOUNTING PLATES:** These will be made of galvanized steel. Corner anchors will contain multiple connection points to allow for adjustability of the turnbuckles as well as connection of a safety rope. Centre mast anchors will consist of a stub post that will stabilize the mast and an anchor ring that will secure the assembly to the concrete. This two-piece assembly allows for fine positioning of the post stub to be accomplished during installation, making the process simpler and easier.
- ANCHOR BOLTS:** Mounting plates will be secured to concrete blocks with 7/8" (22mm) diameter x 20" (500mm) long "L" Anchor bolts, inserted into the wet concrete when poured.
- INSTALLATION:** This should be installed only by a licensed playground installer, trained and certified on the relevant playground standards in place in the region of installation, e.g., NPSI, CPSI or similar certified.
- COMPLIANT WITH:** **CAN/CSA-Z614-07**  
**ASTM F-1487-11**  
**EN-1176**  
**CPSI Handbook for Public Playground Safety**
- TÜV CERTIFIED:** Certified to EN 1176:2008 TÜV Rhineland Certificate N° AK50162502
- OPTIONS:** Optional Equipment:
- Poured-In-Place Enclosure (Max. Qty: 8) #DX-PIP-01
  - Polished Stainless Steel Post (Max. Qty: 4) #SS-POST



Support Posts



Seat & Shield Connector



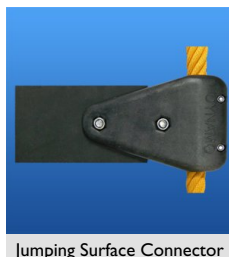
Climbing Net - 20 mm



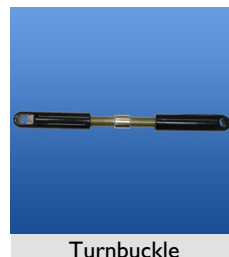
Ball Knot



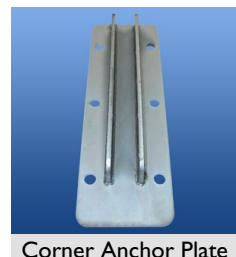
Jumping Surface Material



Jumping Surface Connector



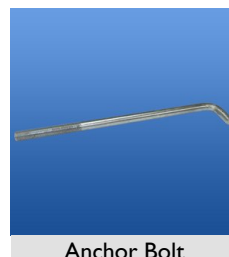
Turnbuckle



Corner Anchor Plate



Adjustable Centre Anchor



Anchor Bolt