

DOCUMENT No:		200-000-443			
REVISION HISTORY					
REV	DESCRIPTION	REF. No.	DATE	DRWN BY:	RWD BY:
A	ISSUED FOR INFORMATION		-	-	


CLIENT:	STOCK
PROJECT NAME:	STOCK
PRODUCT NO:	DX-SM01

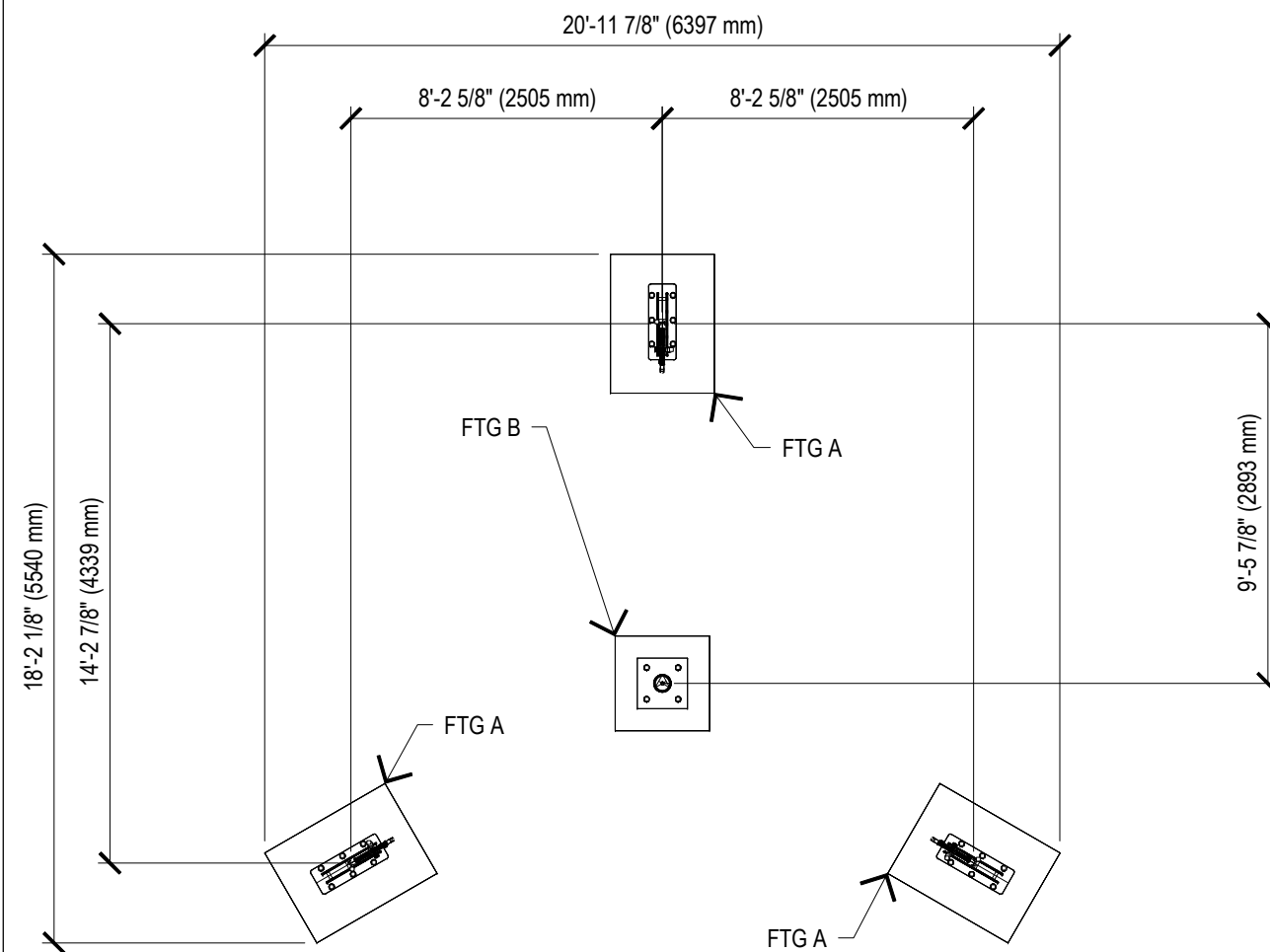
DRAWING TITLE:			
SM TETARNET			
EN USE ZONE			
(SAFETY AREA) DRAWING			

REV:	SHEET:	SHEET SIZE:	SCALE:
0	1 OF 1	PA3	NTS

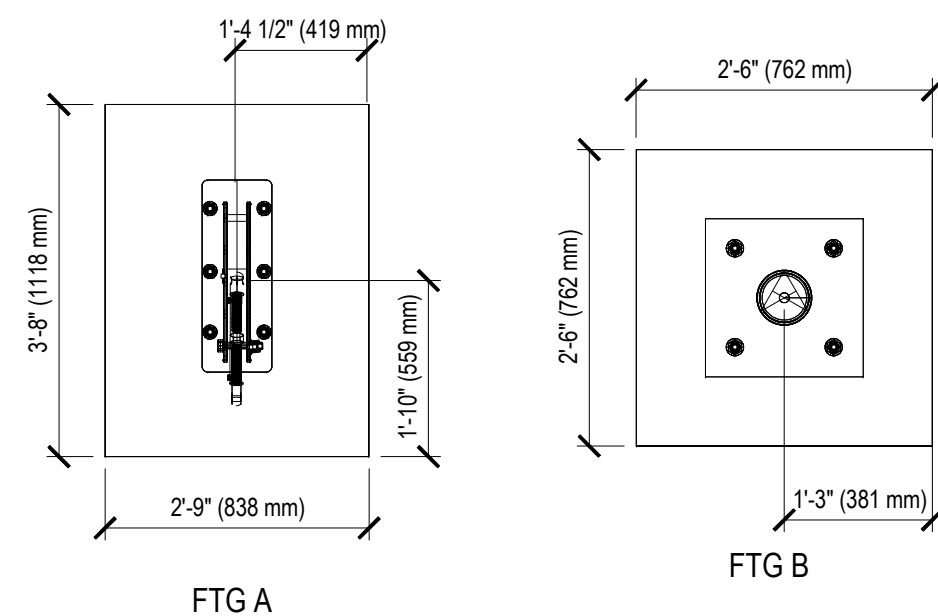
DESIGNED BY:	JZ	DATE:	2018-10-10
DRAWN BY:	JZ	DATE:	2018-10-10
CHECKED BY:		DATE:	
CHECKED BY:		DATE:	
REVIEWED BY:		DATE:	



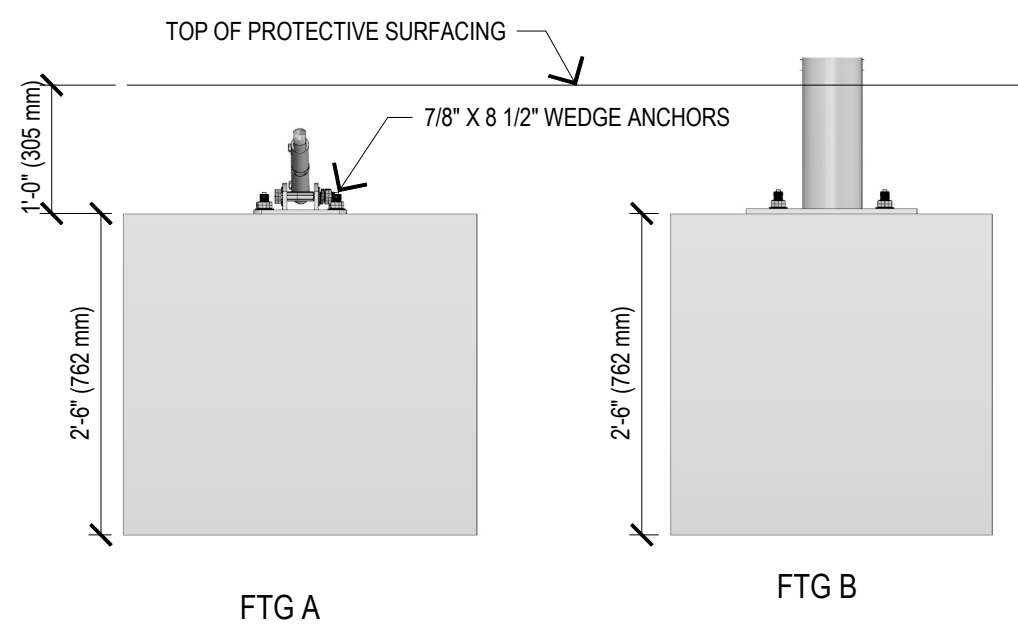
Local: 613-446-0030  
Toll free: 800-790-0034  
Email: [info@dynamoplaygrounds.com](mailto:info@dynamoplaygrounds.com)  
Fax: 613-446-0034  
URL: [www.dynamoplaygrounds.com](http://www.dynamoplaygrounds.com)



PLAN VIEW



FOOTING DETAIL - PLAN VIEW



FOOTING DETAIL - ELEVATION VIEW

DOCUMENT NO:		200-000-435
REV. NO.	DESCRIPTION/REFERENCE	DATE
0	ISSUED FOR USE	18-11-13

### General Notes:

1. THE FOUNDATION IN THE DRAWING TO BE USED AS A MINIMUM GUIDELINE.
2. THE CONCRETE SHALL BE GRADE C25 (CHARACTERISTIC STRENGTH OF 3500 PSI AT 28 DAYS) MINIMUM.
3. THE FOUNDATION SHALL BE PLACED ON FIRM, UNDISTURBED SOIL SURFACE. WHEREVER EXCAVATION OCCURS BELOW THE DESIGNED FOUNDATION LEVEL, WELL COMPACTED BACK FILL OR LEAN CONCRETE SHALL BE USED FOR LEVELING.
4. BACKFILLING FOR FOUNDATION SHALL BE PLACED EVENLY IN LAYERS OF 6" (150mm) THICKNESS AND SHALL BE WELL COMPACTED.
5. THE FOUNDATION DESIGN IS SUITABLE FOR SOIL WITH A BEARING CAPACITY OF 1600 PSF (80 KPA) AND ABOVE.
6. THE FOUNDATION DESIGN IS SUITABLE FOR SOIL WITH FROST LINE OF 4' (1200 MM) OR LESS.

DRAWING TITLE: <b>SM TRETRANET Foundation Drawing</b>		
PRODUCT NO: <b>DX -SM01</b>		
	NAME	DATE
DESIGNER:	Jason Zhai	2018-10-03
DRAWN BY:	JZ	2018-10-03
CHECKED BY:		
REVIEWED BY:		
APPROVED BY:		
SHEET SIZE: <b>PA3</b>	PAGE NO: <b>1 of 1</b>	SCALE: <b>NTS</b>

**DYNAMO**  
PLAYGROUNDS

www.dynamoplaygrounds.com  
info@dynamoplaygrounds.com  
Toll free: 800-790-0034  
Local: 613-446-0030  
Fax: 613-446-0034