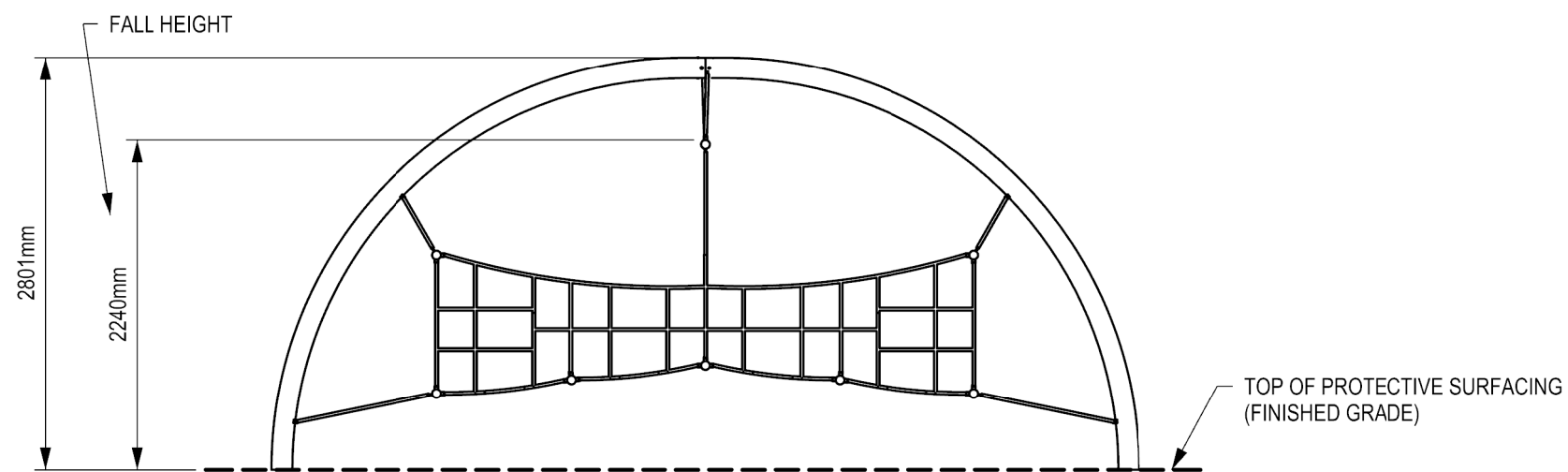


1 EN USE ZONE (IMPACT AREA) PLAN VIEW



2 ELEVATION VIEW

DOCUMENT No: 200-001-010

REVISION HISTORY					
REV	DESCRIPTION	REF. No.	DATE	DRWN BY:	RWD BY:
0	Initial Release	WO# 410	2020-02-12	WM	

ENGINEERING SEAL:

CLIENT: STOCK

PROJECT NAME: STOCK

PRODUCT NO: DX-915

DRAWING TITLE:  
NEBULA MINI I EN  
USE ZONE (IMPACT AREA)  
DRAWING

REV:	SHEET:	SHEET SIZE:	SCALE:
0	1 OF 1	PA3	NTS

DESIGNED BY: DATE:

DRAWN BY: W. MCNAIR DATE: 2020-02-12

CHECKED BY: DATE:

REVIEWED BY: DATE:

APPROVED BY: DATE:

**DYNAMO**  
PLAYGROUNDS

Local: 613-446-0030  
Toll free: 800-790-0034  
Email: [info@dynamoplaygrounds.com](mailto:info@dynamoplaygrounds.com)  
Fax: 613-446-0034  
URL: [www.dynamoplaygrounds.com](http://www.dynamoplaygrounds.com)

DOCUMENT No:		200-000-963			
REVISION HISTORY					
REV	DESCRIPTION	REF. No.	DATE	DRWN BY:	RWD BY:
0	Initial Release	410	2019-12-03	H.E.	

**GENERAL NOTES:**

1. THE FOUNDATION IN THE DRAWING TO BE USED AS A MINIMUM GUIDELINE. CHECK WITH LOCAL ENGINEERS
2. THE CONCRETE SHALL BE GRADE C25 (CHARACTERISTIC STRENGTH OF 3500 PSI AT 28 DAYS) MINIMUM.
3. THE FOUNDATION SHALL BE PLACED ON FIRM, UNDISTURBED SOIL SURFACE. WHEREVER EXCAVATION OCCURS BELOW THE DESIGNED FOUNDATION LEVEL, WELL COMPACTED BACK FILL OR LEAN CONCRETE SHALL BE USED FOR LEVELING.
4. BACKFILLING FOR FOUNDATION SHALL BE PLACED EVENLY IN 6" (150mm) LAYERS. LAYERS SHALL BE WELL COMPACTED.
5. THE FOUNDATION DESIGN IS SUITABLE FOR SOIL WITH A BEARING CAPACITY OF 1600 PSF (80 KPA) AND ABOVE.
6. THE FOUNDATION DESIGN IS SUITABLE FOR SOIL WITH FROST LINE OF 4' (1200 MM) OR LESS.
7. ALL DIMENSIONS ARE IN INCHES UNLESS OTHERWISE SPECIFIED.

ENGINEERING SEAL:

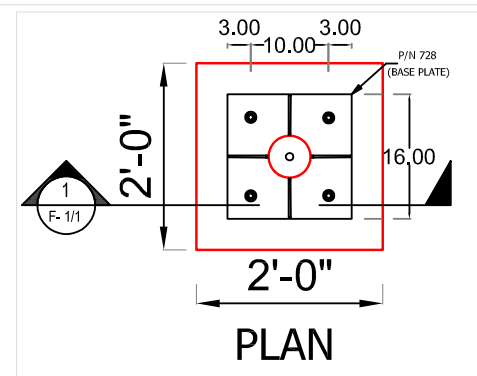
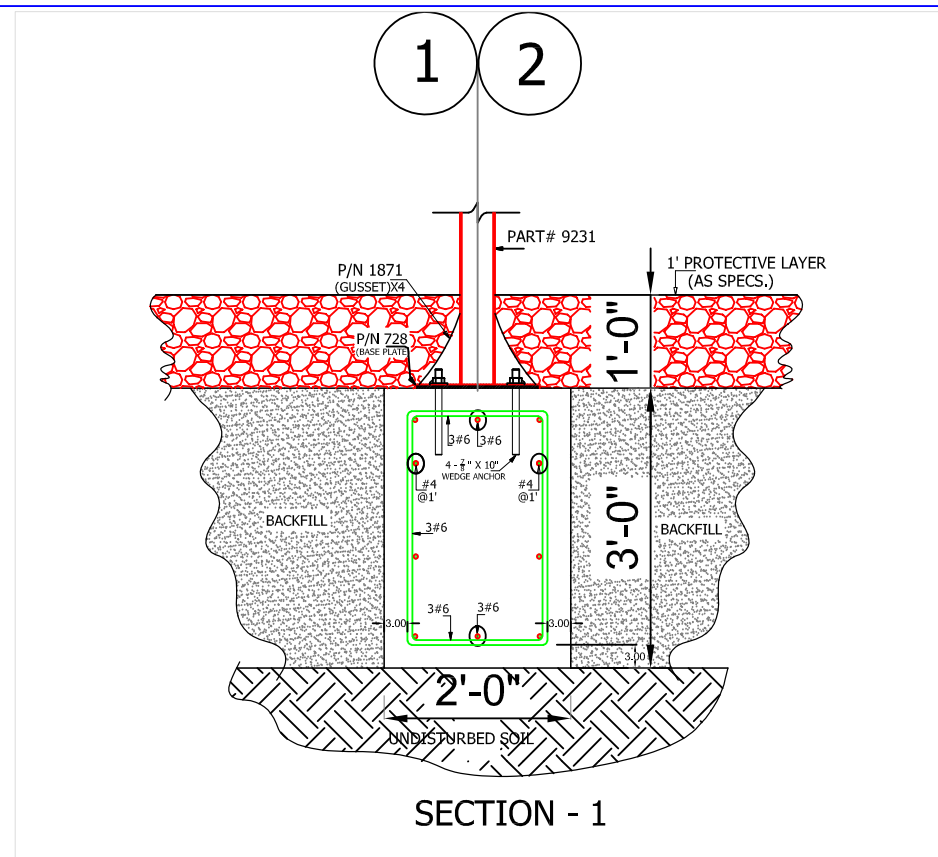
CLIENT: OAK TREE PARK & RECREATION D  
 PROJECT NAME: NEBULA MINI 1  
 PRODUCT NO: DX - 915

DRAWING TITLE:  
**FOUNDATION LAYOUT DETAILS**

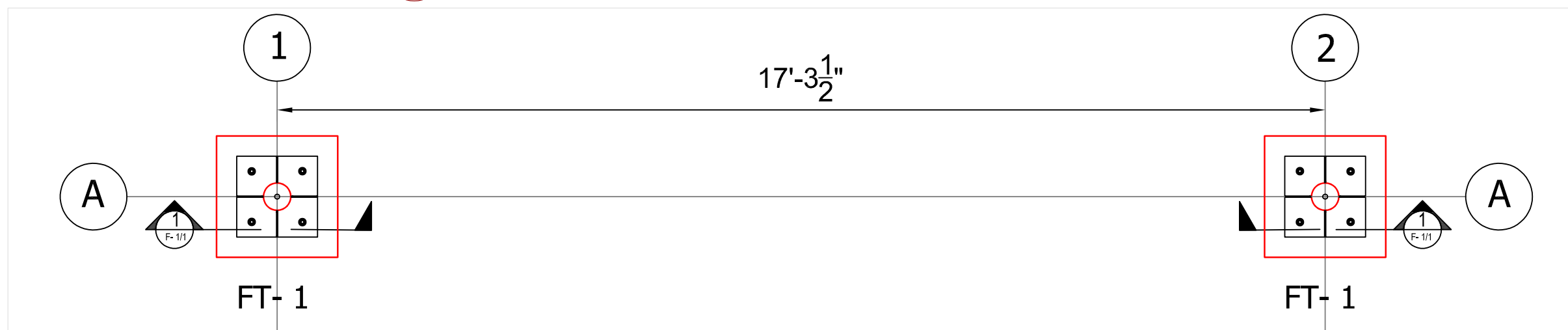
REV: 0	SHEET: 1 OF 1	SHEET SIZE: PA3	SCALE: 1/2" : 1'
DESIGNED BY: HESHAM ELGENDI	DATE: 2019-12-03		
DRAWN BY: HESHAM ELGENDI	DATE: 2019-12-03		
CHECKED BY:	DATE:		
REVIEWED BY:	DATE:		
APPROVED BY:	DATE:		

**DYNAMO**  
 PLAYGROUNDS

Local: 613-446-0030  
 Toll free: 800-790-0034  
 Email: info@dynamoplaygrounds.com  
 Fax: 613-446-0034  
 URL: www.dynamoplaygrounds.com



1 FT - 1 DETAILS  
 F1/1



X FOUNDATION PLAN  
 F 1/1