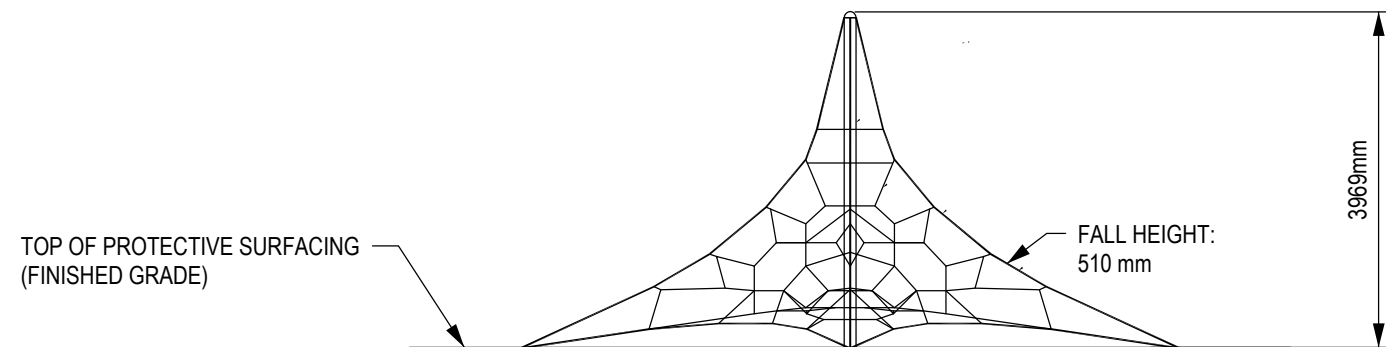


1
-
EN USE ZONE



2
-
ELEVATION VIEW

DOCUMENT No: 200-001-778

REVISION HISTORY					
REV	DESCRIPTION	REF. No.	DATE	DRWN BY:	CHK BY:
0	Initial Release	RX	2009-05-01		
1	Update To New template and Layout		2022-08-07	SA	JC

ENGINEERING SEAL:

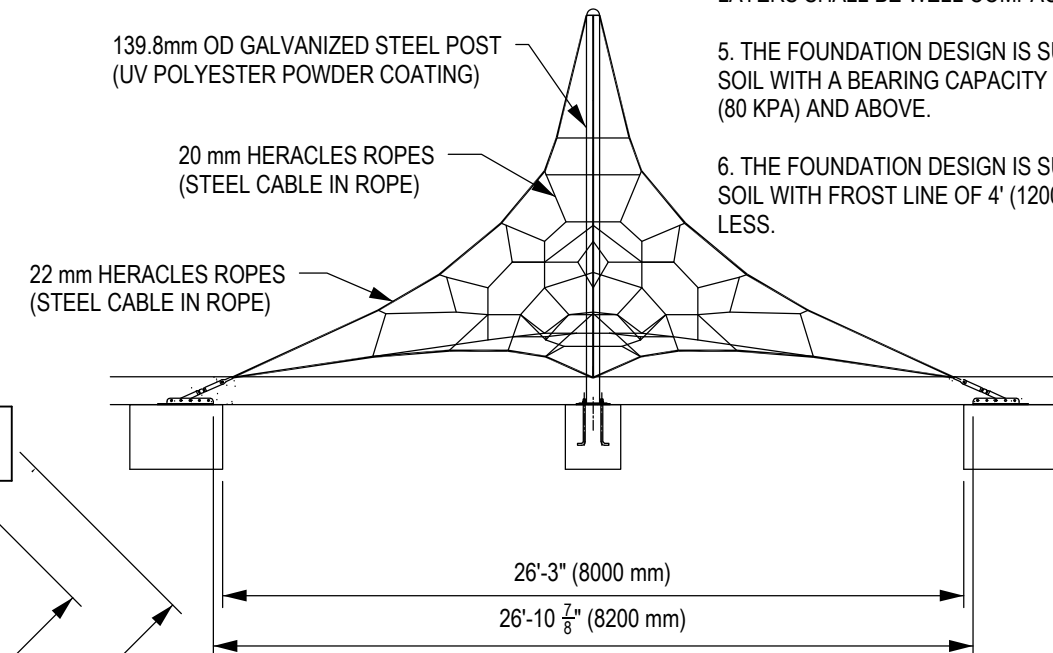
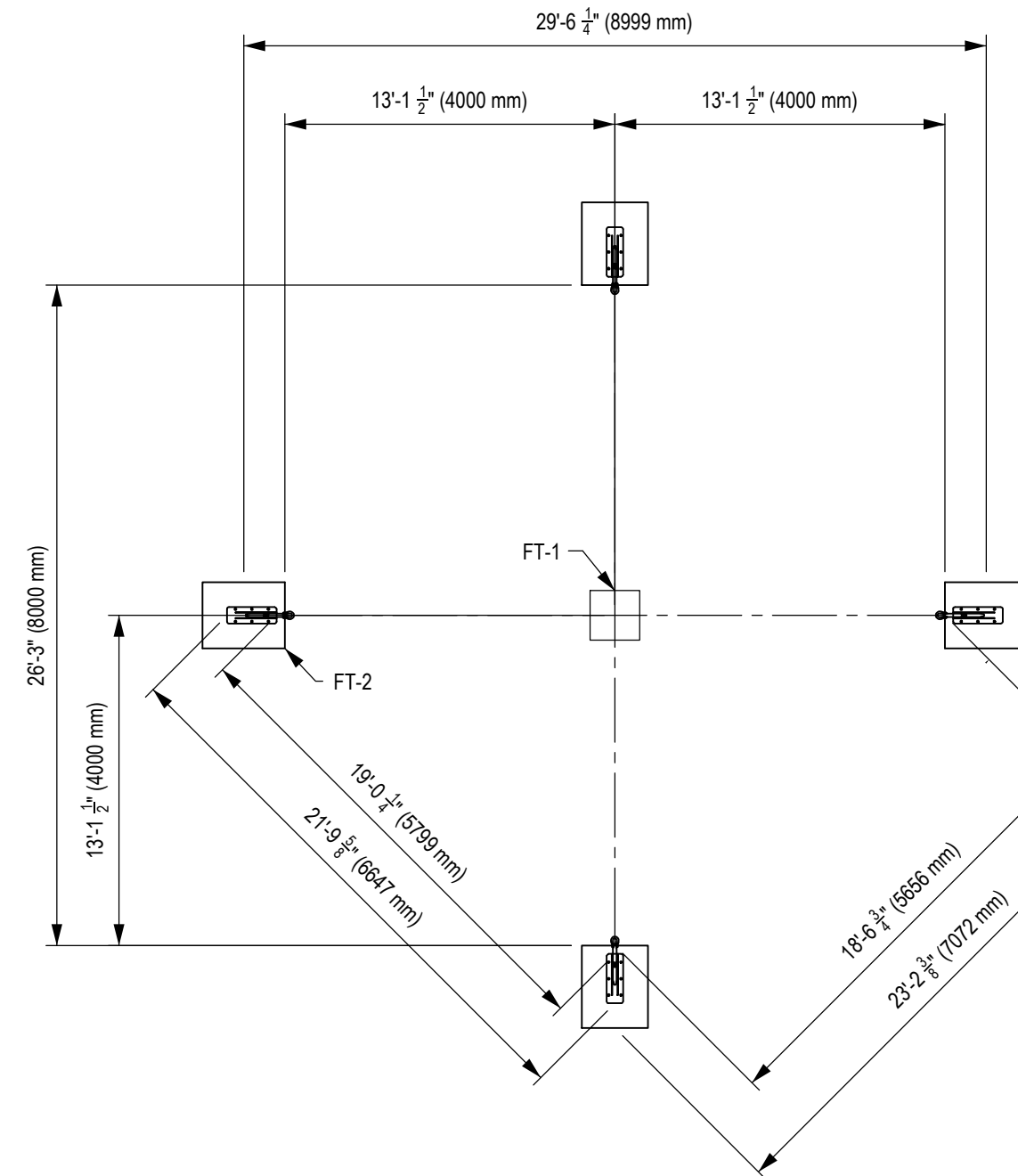
CLIENT: STOCK
PROJECT NAME: STOCK
PRODUCT NO: DX-101

DRAWING TITLE:
GENESIS REGULAR
EN USE ZONE DRAWING

REV:	SHEET:	SHEET SIZE:	SCALE:
1	1 OF 1	PA3	NTS

DESIGNED BY:	DATE:
DRAWN BY: RX	DATE: 2009-05-01
CHECKED BY:	DATE:
REVIEWED BY:	DATE:
APPROVED BY:	DATE:

DYNAMO
PLAYGROUNDS
Local: 613-446-0030
Toll free: 800-790-0034
Email: info@dynamoplaygrounds.com
Fax: 613-446-0034
URL: www.dynamoplaygrounds.com



1 FOUNDATION LAYOUT PLAN VIEW

GENERAL NOTES:

1. THE FOUNDATION IN THE DRAWING TO BE USED AS A MINIMUM GUIDELINE. CHECK WITH LOCAL ENGINEERS TO ENSURE MINIMUM REINFORCEMENT TO BE APPLIED.

2. THE CONCRETE SHALL BE GRADE C25 (CHARACTERISTIC STRENGTH OF 3500 PSI AT 28 DAYS) MINIMUM.

3. THE FOUNDATION SHALL BE PLACED ON FIRM, UNDISTURBED SOIL SURFACE. WHEREVER EXCAVATION OCCURS BELOW THE DESIGNED FOUNDATION LEVEL, WELL COMPACTED BACK FILL OR LEAN CONCRETE SHALL BE USED FOR LEVELING.

4. BACKFILLING FOR FOUNDATION SHALL BE PLACED EVENLY IN 6" (150mm) LAYERS. LAYERS SHALL BE WELL COMPACTED.

5. THE FOUNDATION DESIGN IS SUITABLE FOR SOIL WITH A BEARING CAPACITY OF 1600 PSF (80 KPA) AND ABOVE.

6. THE FOUNDATION DESIGN IS SUITABLE FOR SOIL WITH FROST LINE OF 4' (1200 MM) OR LESS.

DOCUMENT No: 200-001-780

REVISION HISTORY					
REV	DESCRIPTION	REF. No.	DATE	DRWN BY:	CHK BY:
0	INITIAL RELEASE	RX	2009-05-01		
1	POST PLATE IS CHANGED TO STAR SHAPE	RX			
2	UPDATE TO NEW TEMPLATE AND LAYOUT		2022-08-09	SA	JC

ENGINEERING SEAL:

CLIENT: STOCK

PROJECT NAME: STOCK

PRODUCT NO: DX-101

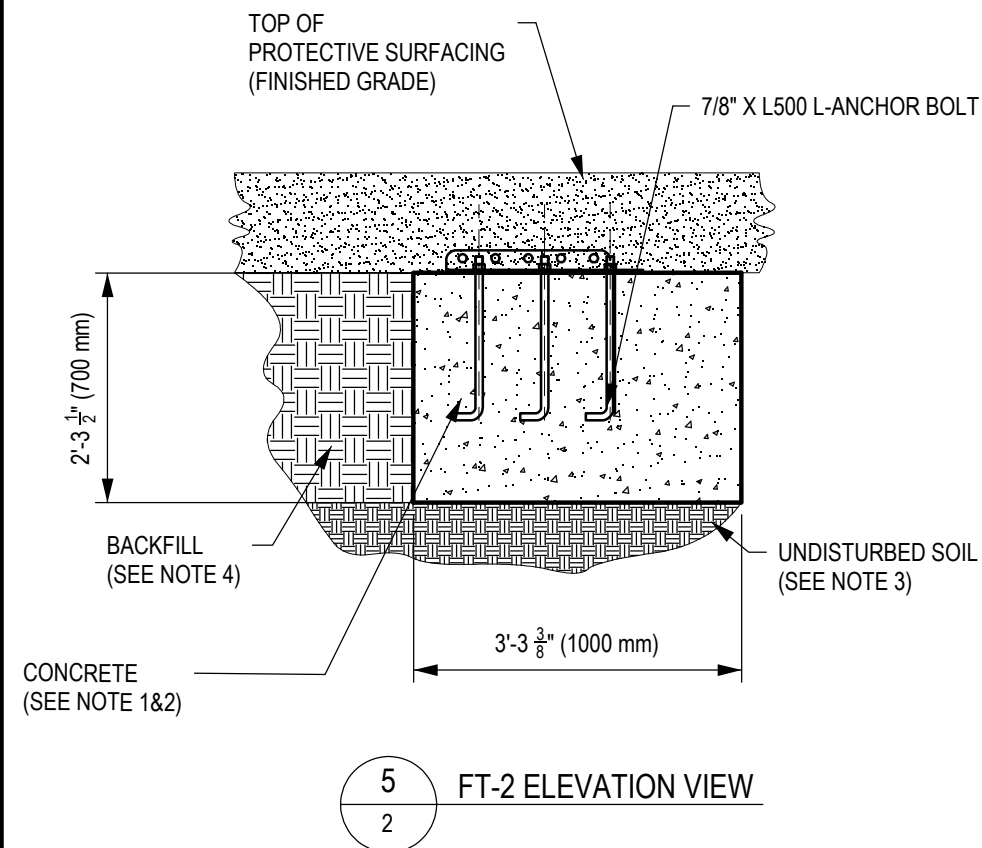
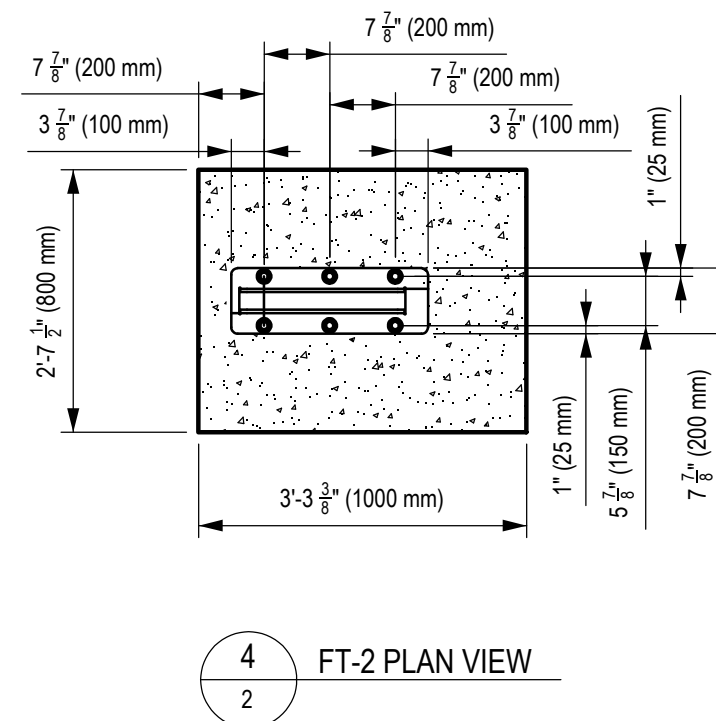
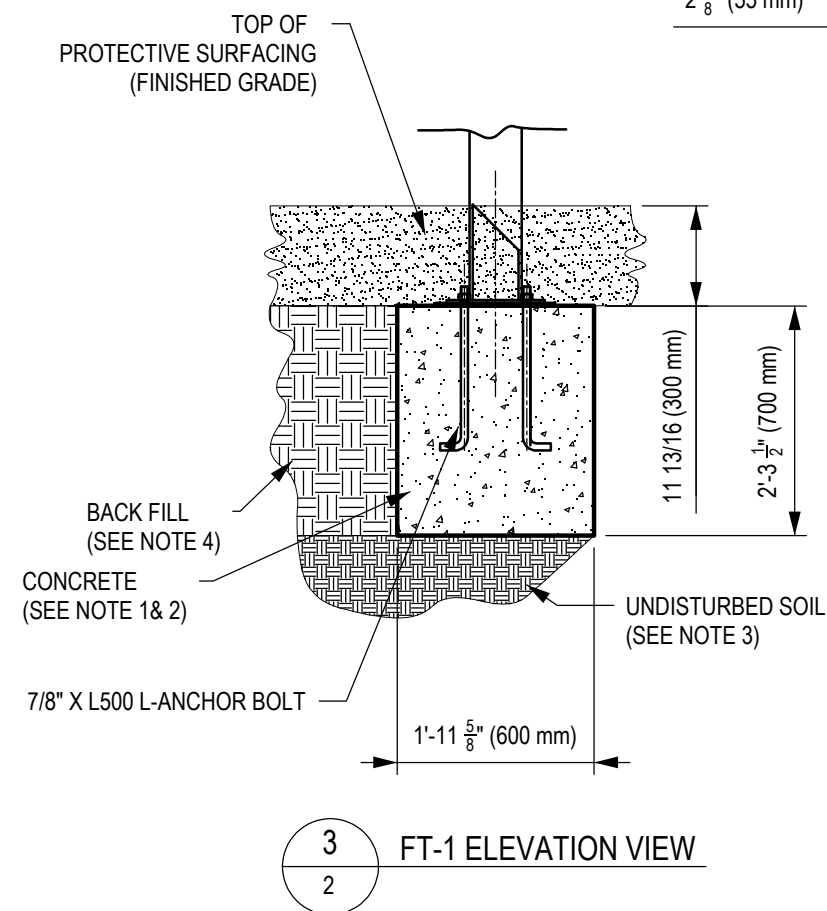
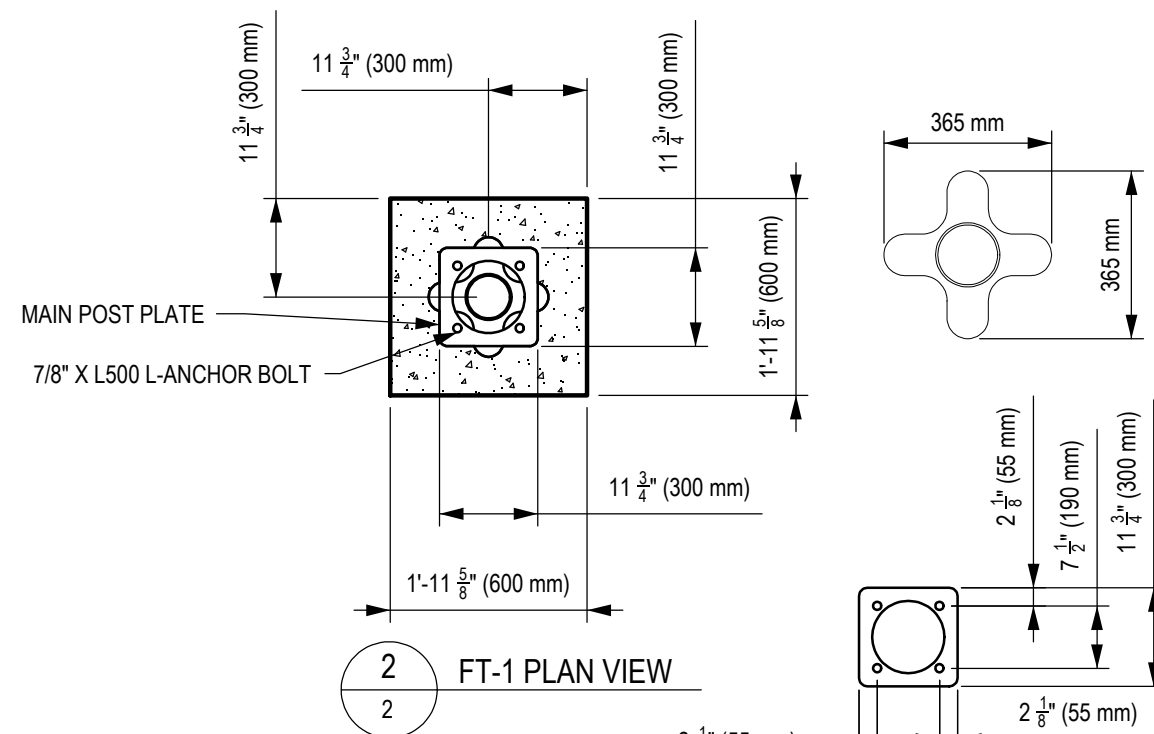
DRAWING TITLE:
GENESIS REGULAR
FOUNDATION DRAWING

REV:	SHEET:	SHEET SIZE:	SCALE:
2	1 OF 2	PA3	NTS

DESIGNED BY:	DATE:
DRAWN BY: RX	DATE: 2009-05-01
CHECKED BY:	DATE:
REVIEWED BY:	DATE:
APPROVED BY:	DATE:

DYNAMO
PLAYGROUNDS

Local: 613-446-0030
Toll free: 800-790-0034
Email: info@dynamoplaygrounds.com
Fax: 613-446-0034
URL: www.dynamoplaygrounds.com



DOCUMENT No: 200-001-780

ENGINEERING SEAL:

CLIENT: STOCK
PROJECT NAME: STOCK
PRODUCT NO: DX-101

DRAWING TITLE:
GENESIS REGULAR
FOUNDATION DRAWING

REV: 2	SHEET: 2 OF 2	SHEET SIZE: PA3	SCALE: NTS
--------	---------------	-----------------	------------

DESIGNED BY:	DATE:
DRAWN BY: RX	DATE: 2009-05-01
CHECKED BY:	DATE:
REVIEWED BY:	DATE:
APPROVED BY:	DATE:

DYNAMO
PLAYGROUNDS

Local: 613-446-0030
Toll free: 800-790-0034
Email: info@dynamoplaygrounds.com
Fax: 613-446-0034
URL: www.dynamoplaygrounds.com