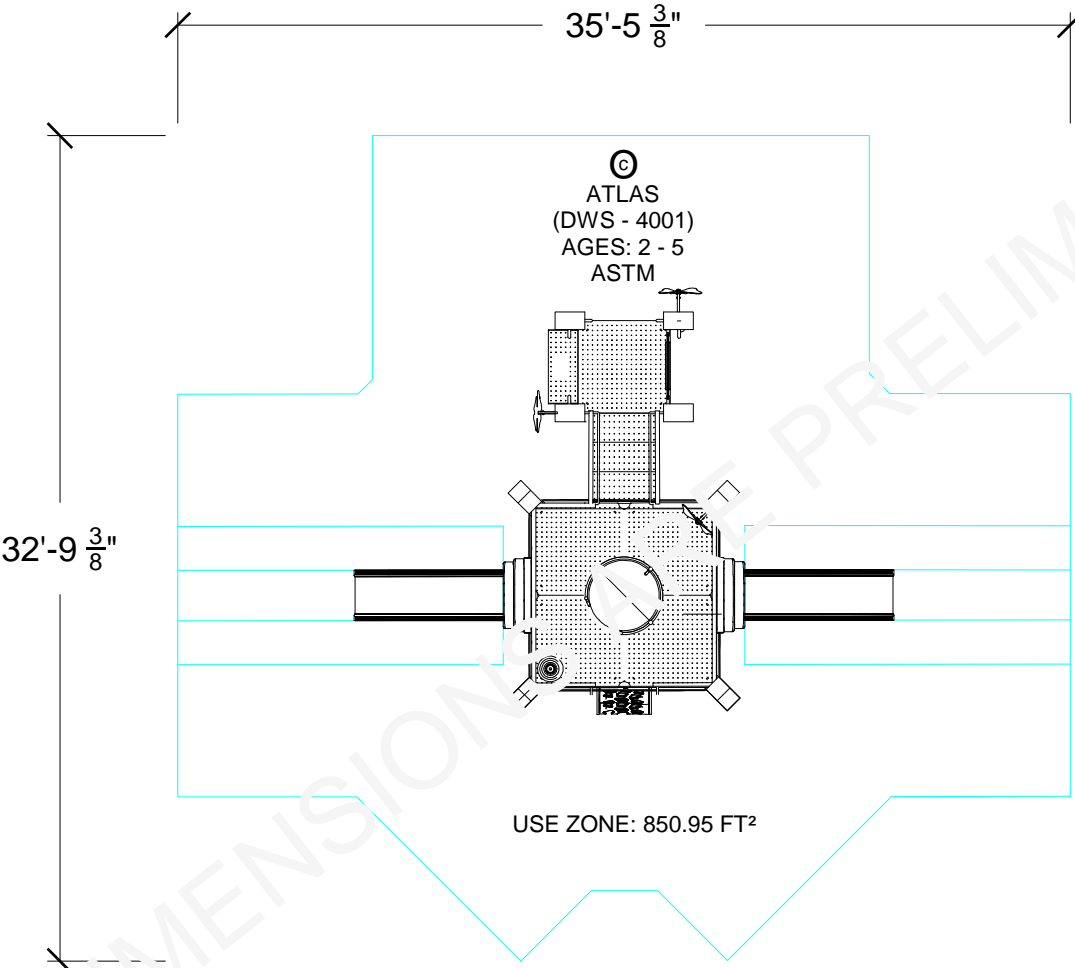


DYNAMO INDUSTRIES IP. USE OF THIS DRAWING AND RELATED INFORMATION IS STRICTLY FOR USE BY DYNAMO'S INTENDED RECIPIENT. DYNAMO PROHIBITS SHARING THIS DRAWING WITH ANYONE ELSE UNLESS APPROVED BY DYNAMO. SHARING THIS DRAWING WITHOUT DYNAMO'S EXPLICIT CONSENT WILL RESULT IN LEGAL ACTION.



PRELIMINARY PRODUCT SPECIFICATIONS:  
ATLAS (DWS - 4001)  
  
STANDARD: ASTM  
AGE GROUP: 2 - 5  
CAPACITY: 20 (APPROX)  
PRODUCT SIZE: L 21' - 5 3/8" X W 16' - 11 1/4" X H 8' - 9 3/8"  
USE ZONE SIZE: L 35' - 5 3/8" X W 32' - 9 3/8"  
USE ZONE AREA: 850.95 FT<sup>2</sup>  
FALL HEIGHT: 6' - 3 5/8"  
SHIPPING WEIGHT: NA

NOTE:  
DYNAMO PLAYGROUNDS NOT RESPONSIBLE FOR CLIENT PROVIDED CAD INACCURACIES.

NOTE  
DYNAMO PLAY EQUIPMENT IS DESIGNED FOR A FLAT HORIZONTAL PLANE UNLESS TOPOGRAPHY AND OR GRADING IS PROVIDED.

NOTE  
DYNAMO NOT RESPONSIBLE FOR TOPOGRAPHY OR GRADING.

NOTE  
DYNAMO NOT RESPONSIBLE FOR THIRD PARTY EQUIPMENT USE ZONES.

NOTE  
DYNAMO NOT RESPONSIBLE FOR COMPLIANCE ISSUES FROM OTHER PRODUCT ENCROACHMENT IN DYNAMO PLAY EQUIPMENT USE ZONES.

NOTE  
ENTIRETY OF DYNAMO PLAY EQUIPMENT USE ZONE TO BE COVERED WITH IMPACT ATTENUATING SURFACING. SURFACING NOT PROVIDED BY DYNAMO.

NOTE  
NO OVERHEAD OBSTRUCTIONS TO ENCROACH WITHIN 84" OFFSET FROM THE TOP SURFACE OF DYNAMO PLAY EQUIPMENT.

NOTE:  
DYNAMO PLAYGROUNDS NOT RESPONSIBLE FOR EXISTING TREE LOCATION, NOR THEIR PROXIMITY TO DYNAMO'S PROPOSED EQUIPMENT AND THEIR USE ZONES.

NOTE:  
DYNAMO NOT RESPONSIBLE FOR ISSUES DERIVING FROM EXISTING ACCESSIBLE RAMP CONFLICTS IF DETAILS ARE NOT PRESENT IN CLIENT SUPPLIED CAD. DYNAMO NOT RESPONSIBLE FOR THE PROVISION OF NEW ACCESSIBLE RAMPS.

ALL DIMENSIONS ARE PRELIMINARY

©  
DYNAMO INDUSTRIES IP. USE OF THIS DRAWING AND RELATED INFORMATION IS STRICTLY FOR USE BY DYNAMO'S INTENDED RECIPIENT. DYNAMO PROHIBITS SHARING THIS DRAWING WITH ANYONE ELSE UNLESS APPROVED BY DYNAMO. SHARING THIS DRAWING WITHOUT DYNAMO'S EXPLICIT CONSENT WILL RESULT IN LEGAL ACTION.

IF EXISTING OR NEW SHADE STRUCTURES WILL BE USED, DYNAMO PLAYGROUNDS REQUESTS SHADE STRUCTURE SPECIFICATIONS TO ENSURE SAFETY STANDARDS COMPLIANCY.

CLIENT:		
PROJECT NAME: ATLAS		
PRODUCT NO: DWS - 4001		
DRAWING TITLE: ATLAS 2D ASTM LAYOUT		
DESIGNER	B.GILL	DATE 2021-01-26
DRAWN BY	B.GILL	DATE 2022-07-28
CHECKED BY		DATE
REVIEWED BY		DATE
APPROVED BY		DATE
PART NO	SHEET 1 OF 1	REV 0